

## **APPENDIX C**

### **CONSTRUCTION PLANS OF THE PILE/PILE CAP SPECIMENS**

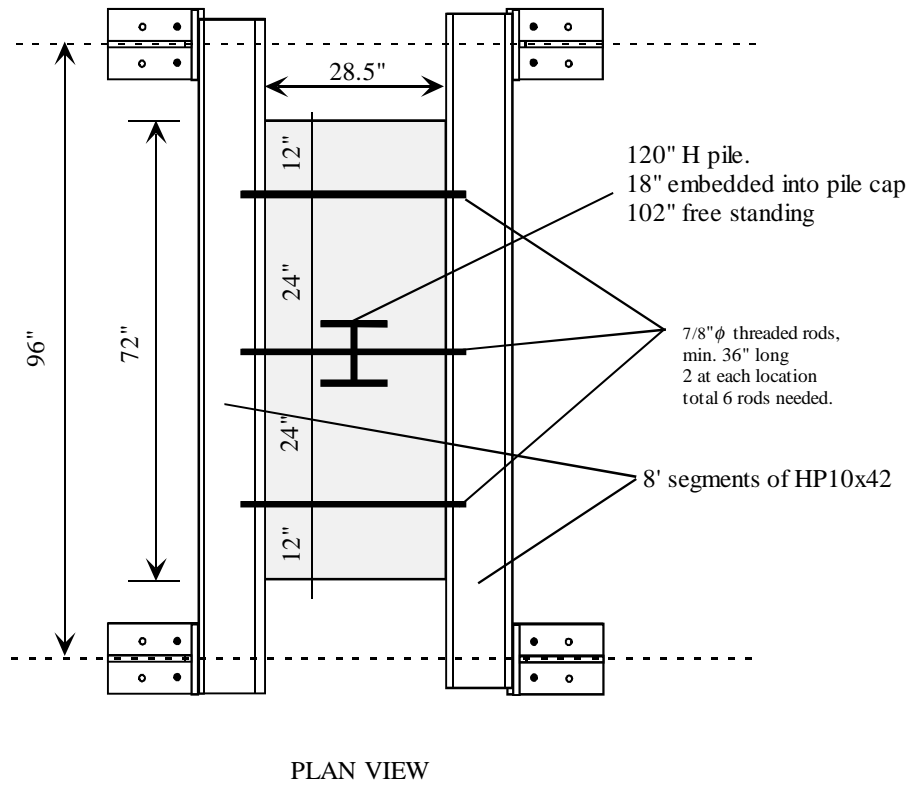


Figure C1. Drawings of steel H-pile



**DETAIL A**

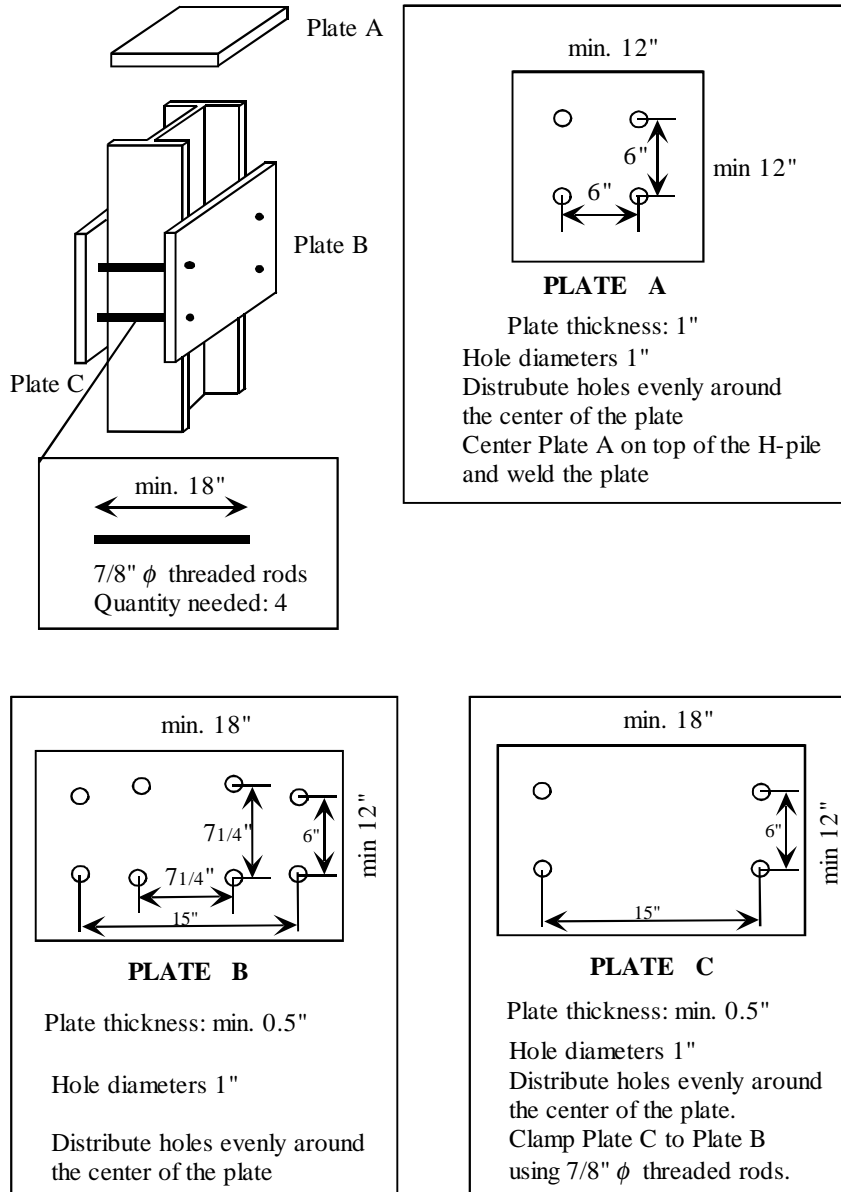


Figure C1 (Continued). Drawings of steel H-pile

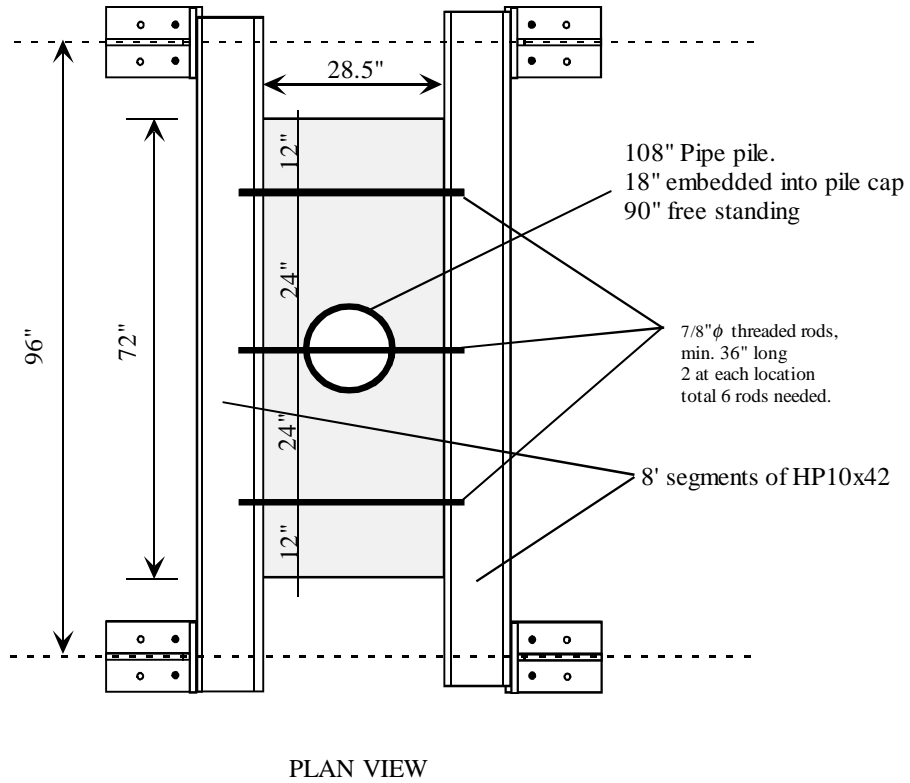
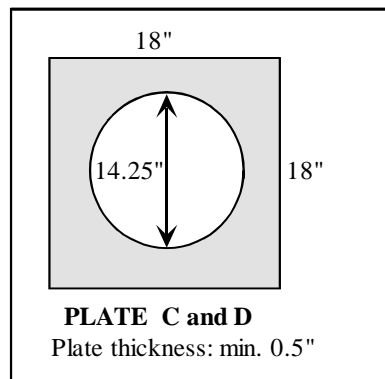
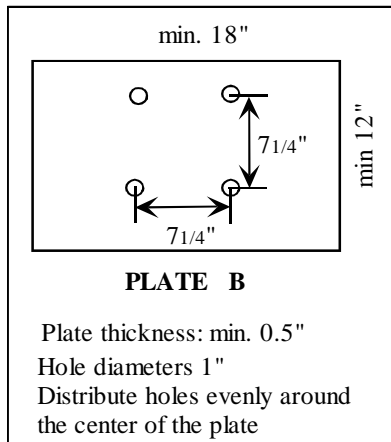
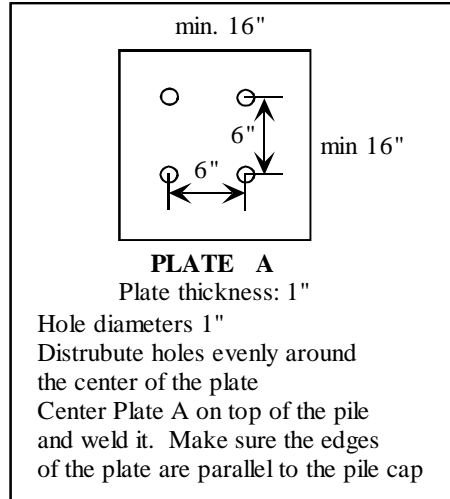
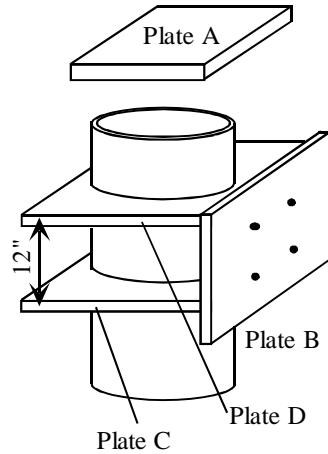


Figure C2. Drawings of steel pipe pile



**DETAIL A2**



**Notes:**  
 Weld Plate B to plates D and E.  
 Weld Plates C and D to the pile

Figure C2 (Continued). Drawings of steel pipe pile

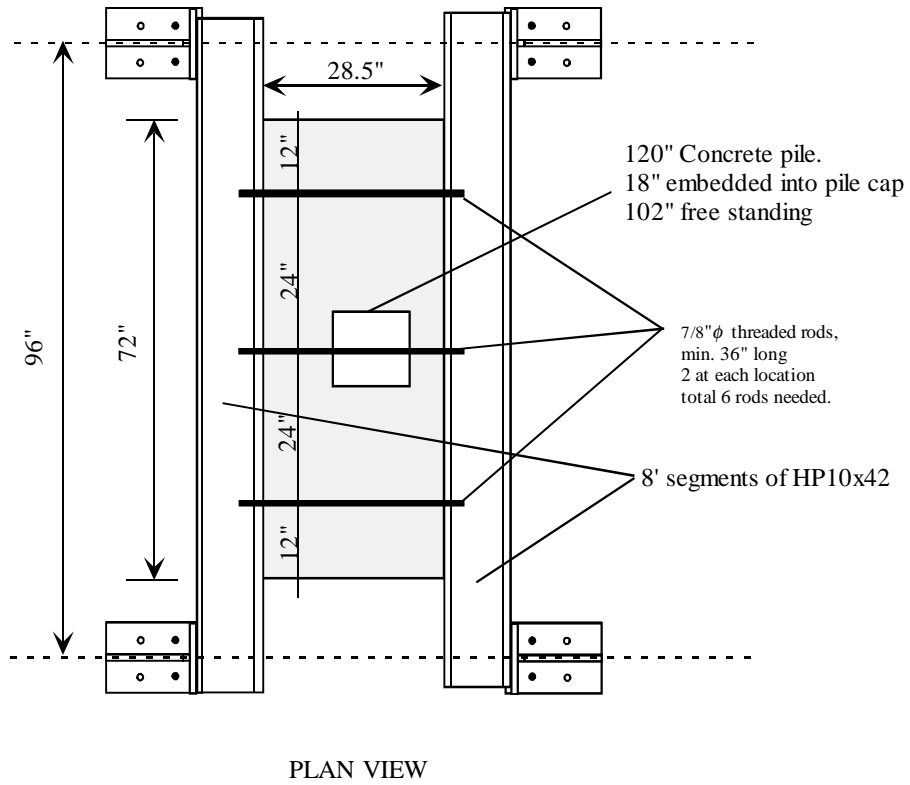


Figure C3. Drawings of prestressed concrete pile

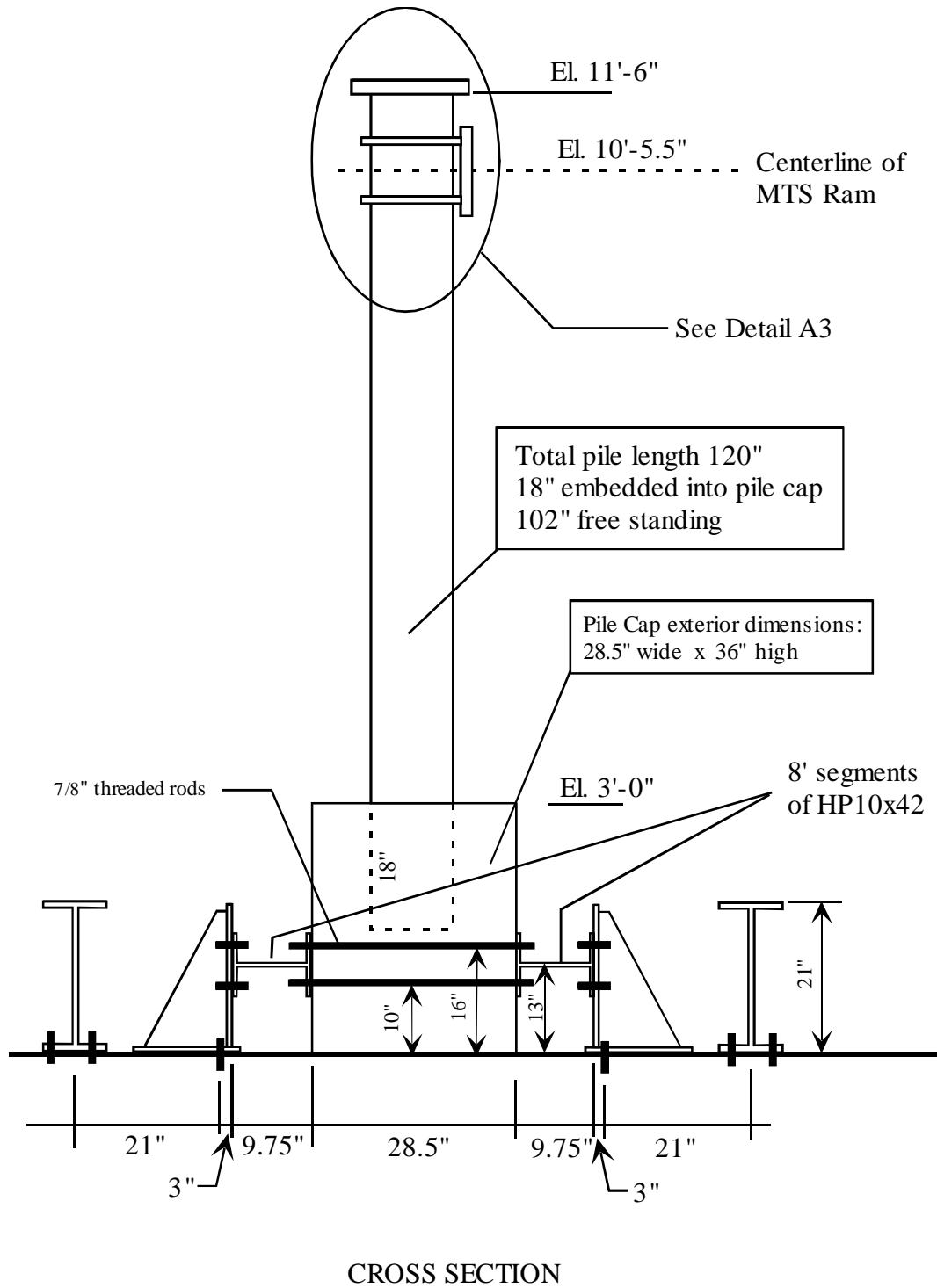


Figure C3 (Continued). Drawings of pre-stressed concrete pile

**DETAIL A3**

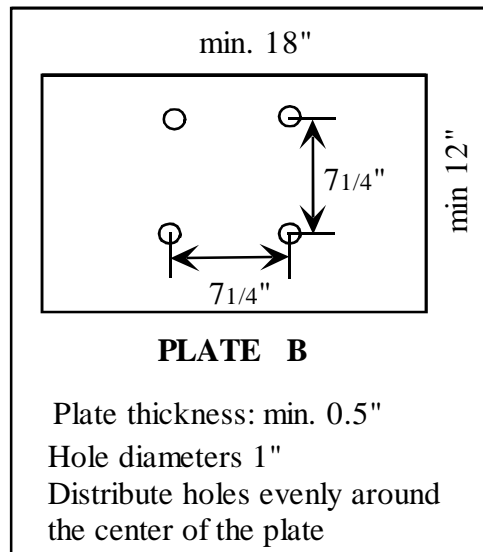
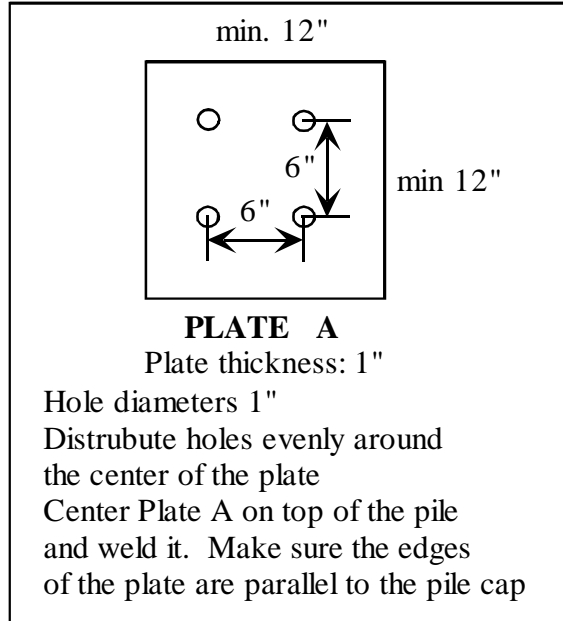
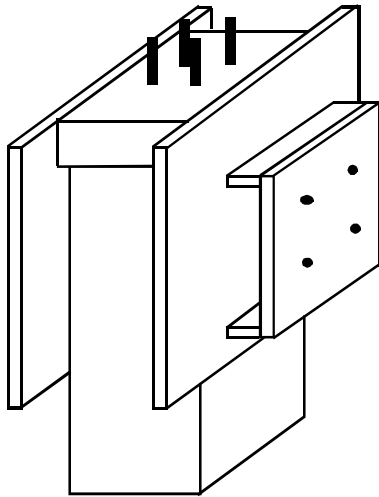
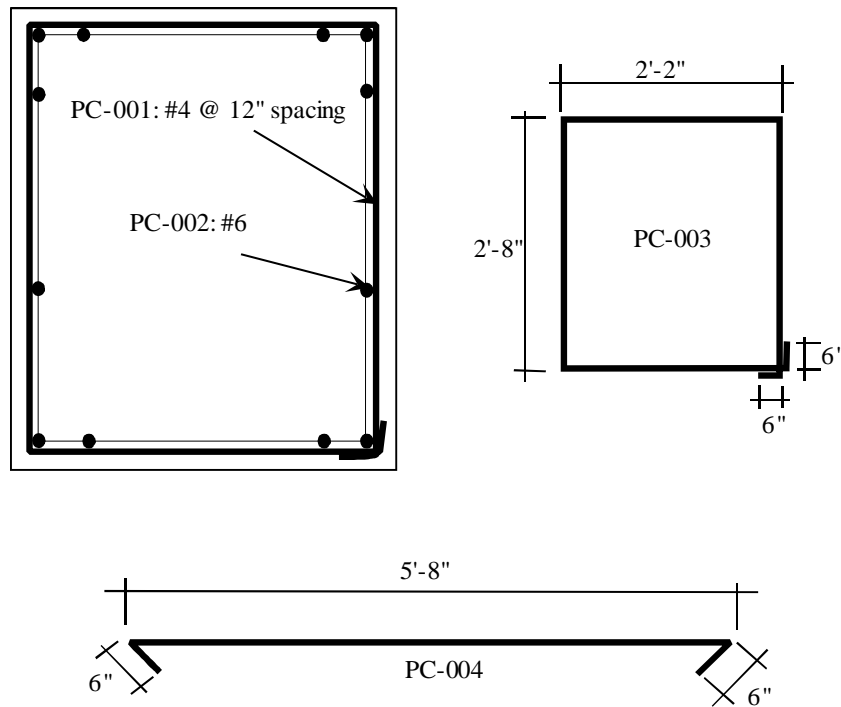


Figure C3 (Continued). Drawings of pre-stressed concrete pile



Reinforcement schedule of the pile/pile cap tests

MARK	Quantity	Bar size	Length	Location
PC-001	7	# 4	10'-8"	Pile cap
PC-002	12	# 6	6'-8"	Pile cap

Figure C4. Steel reinforcement used in the pile caps

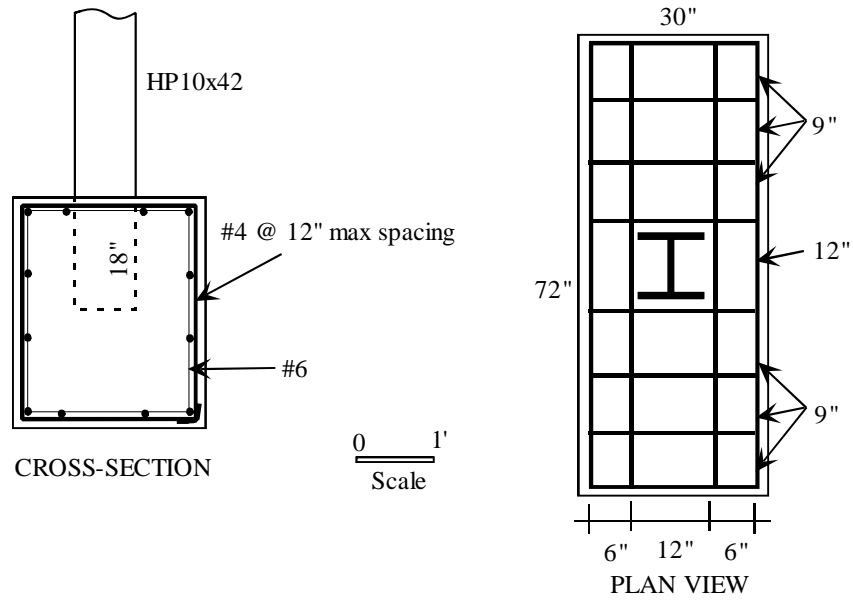


Figure C5. Reinforcement orientation of the H-pile specimen

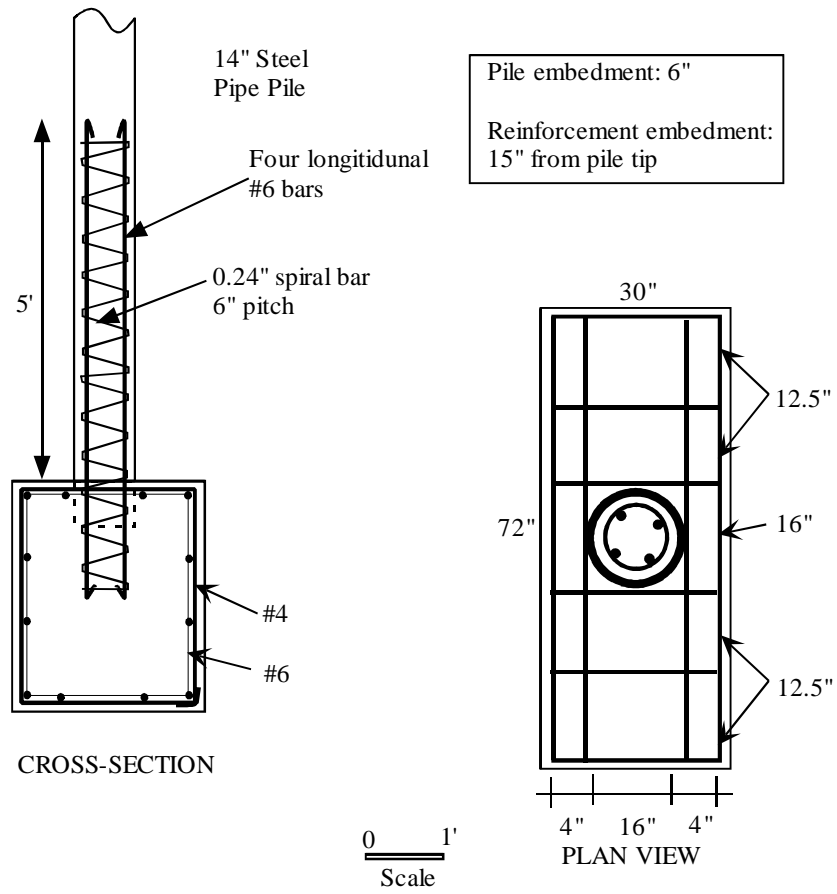


Figure C6. Reinforcement orientation of the pipe pile specimen

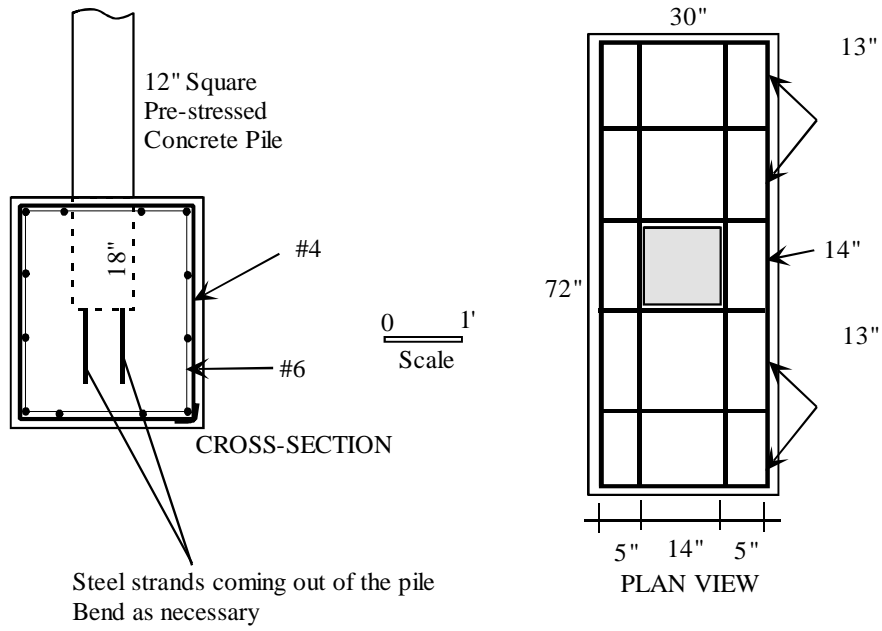


Figure C7. Reinforcement orientation of the pre-stressed concrete pile specimen