

APPENDIX D

GEOTECHNICAL FIELD INVESTIGATIONS AT

THE ROUTE 351 BRIDGE TEST SITE

This appendix contains the results of geotechnical field investigations completed at the test site at the Route 351 bridge project.

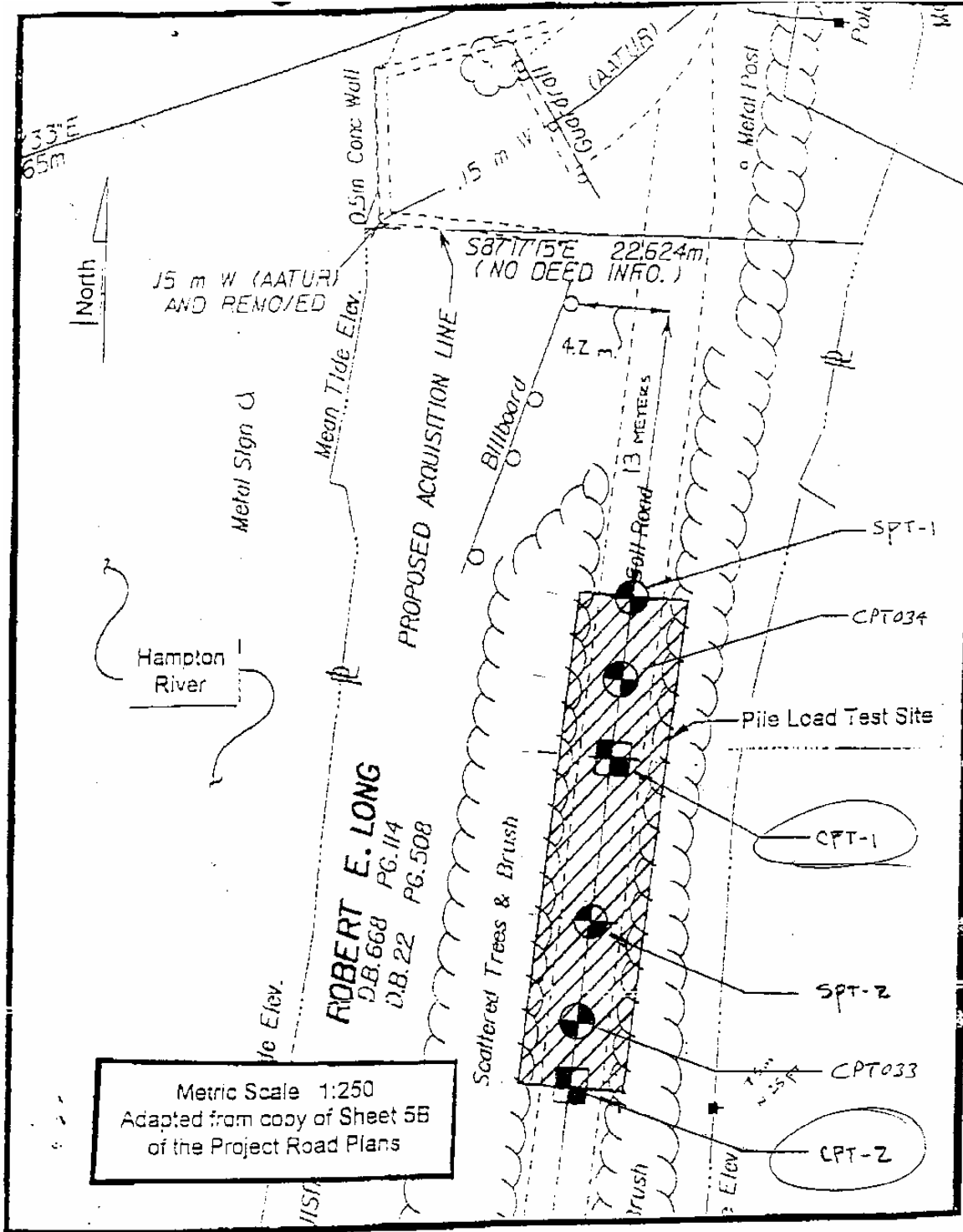


Figure D.1 Location of field tests

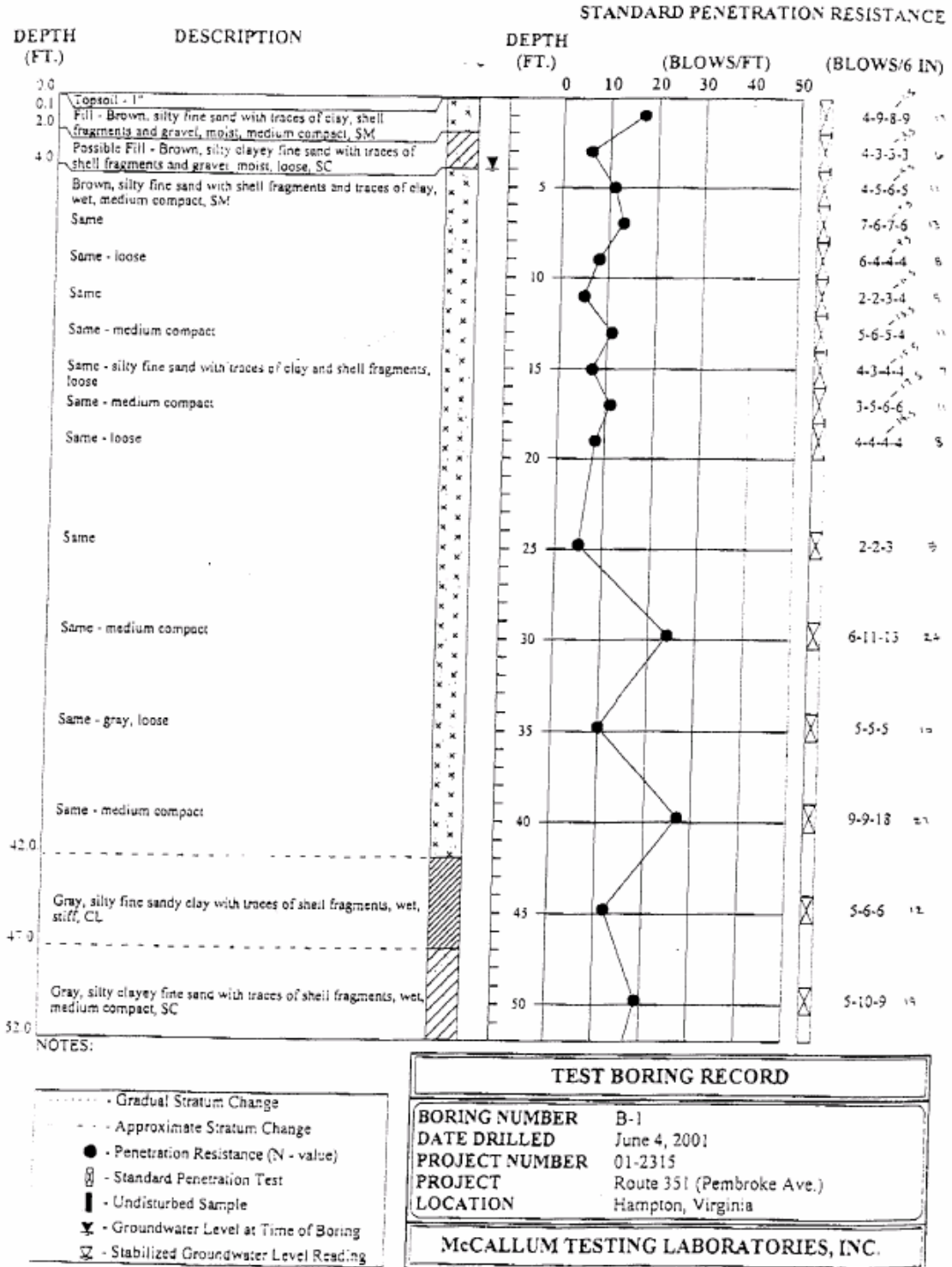
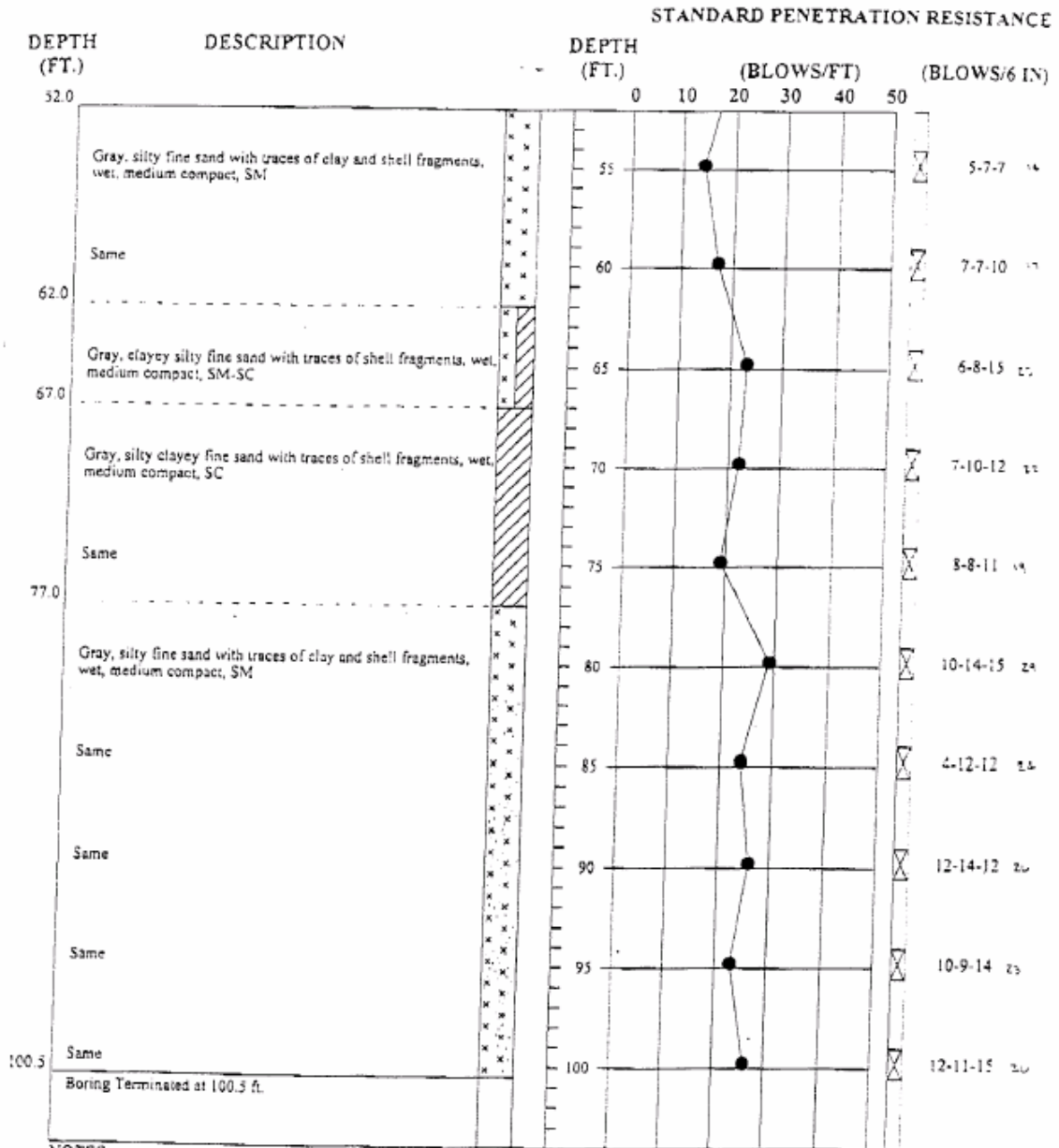


Figure D.2 Boring B-1 (SPT-1)



NOTES:

- - - - Gradual Stratum Change
- - - - Approximate Stratum Change
- - Penetration Resistance (N - value)
- ⊗ - Standard Penetration Test
- ▬ - Undisturbed Sample
- ⊕ - Groundwater Level at Time of Boring
- ⊗ - Stabilized Groundwater Level Reading

TEST BORING RECORD	
BORING NUMBER	B-1
DATE DRILLED	June 4, 2001
PROJECT NUMBER	01-2315
PROJECT	Route 351 (Pembroke Ave.)
LOCATION	Hampton, Virginia

McCALLUM TESTING LABORATORIES, INC.

Figure D.2 Boring B-1 (SPT-1), continued

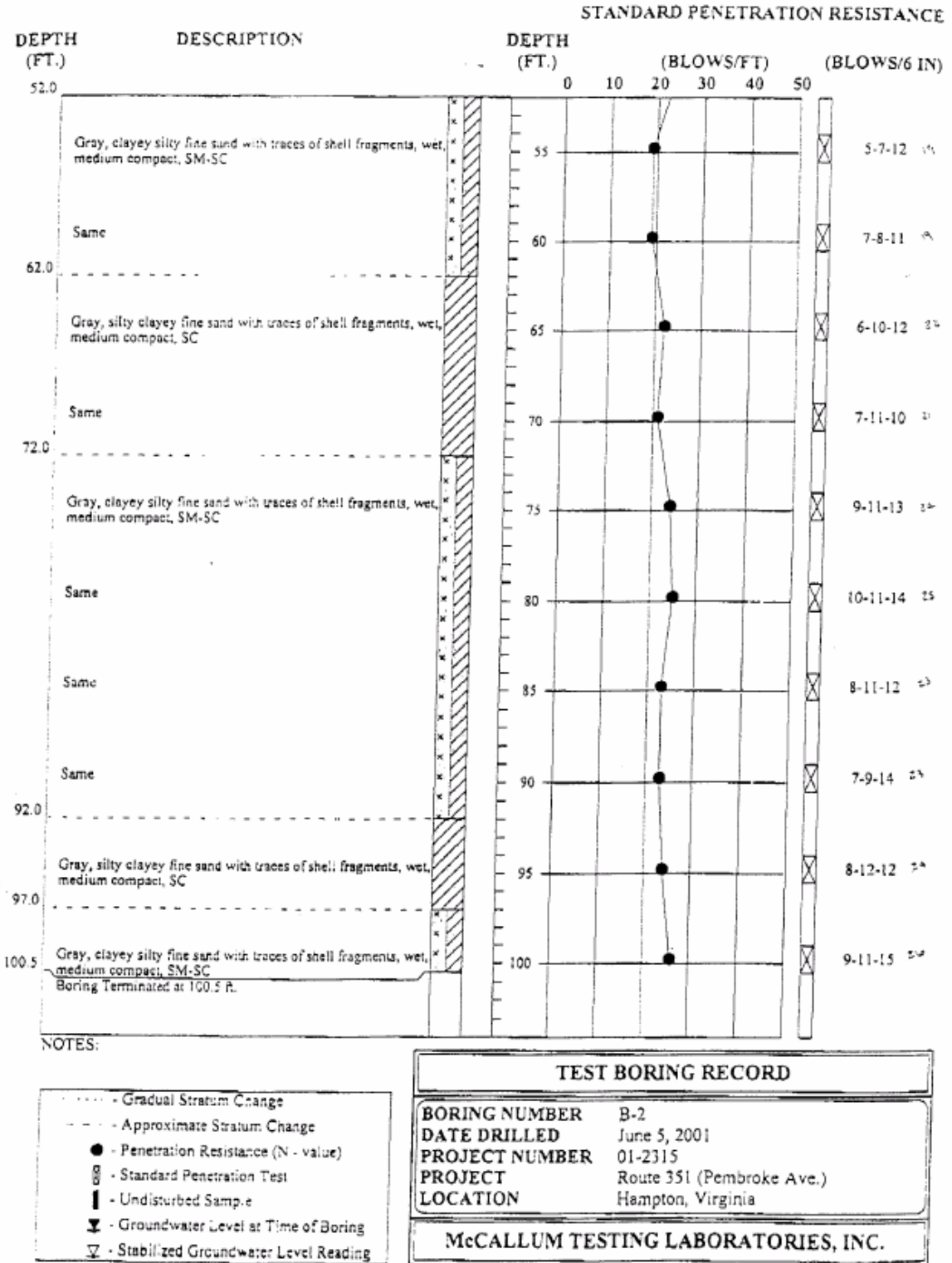


Figure D.3 Boring B-2 (SPT-2), continued

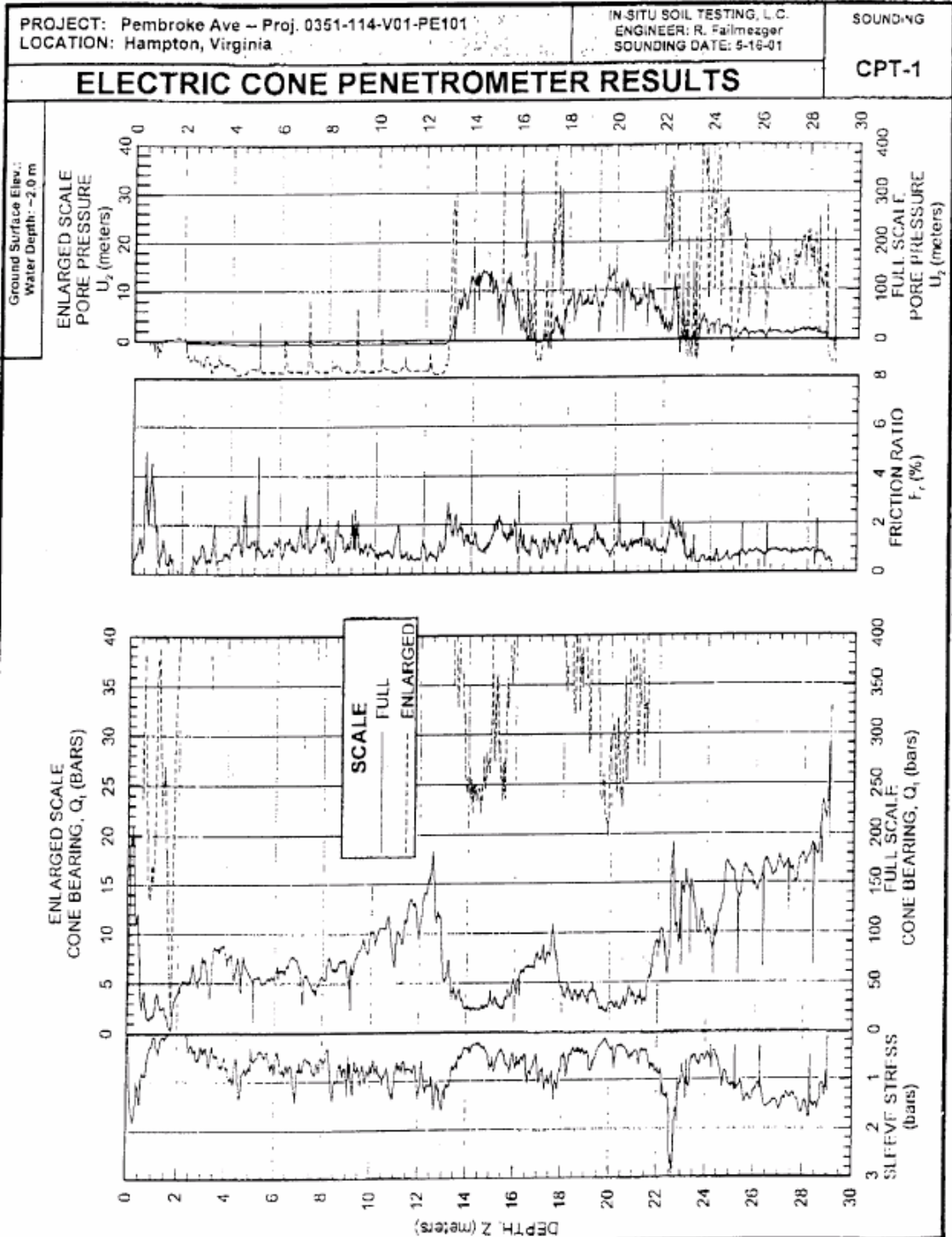


Figure D.4 CPT-1

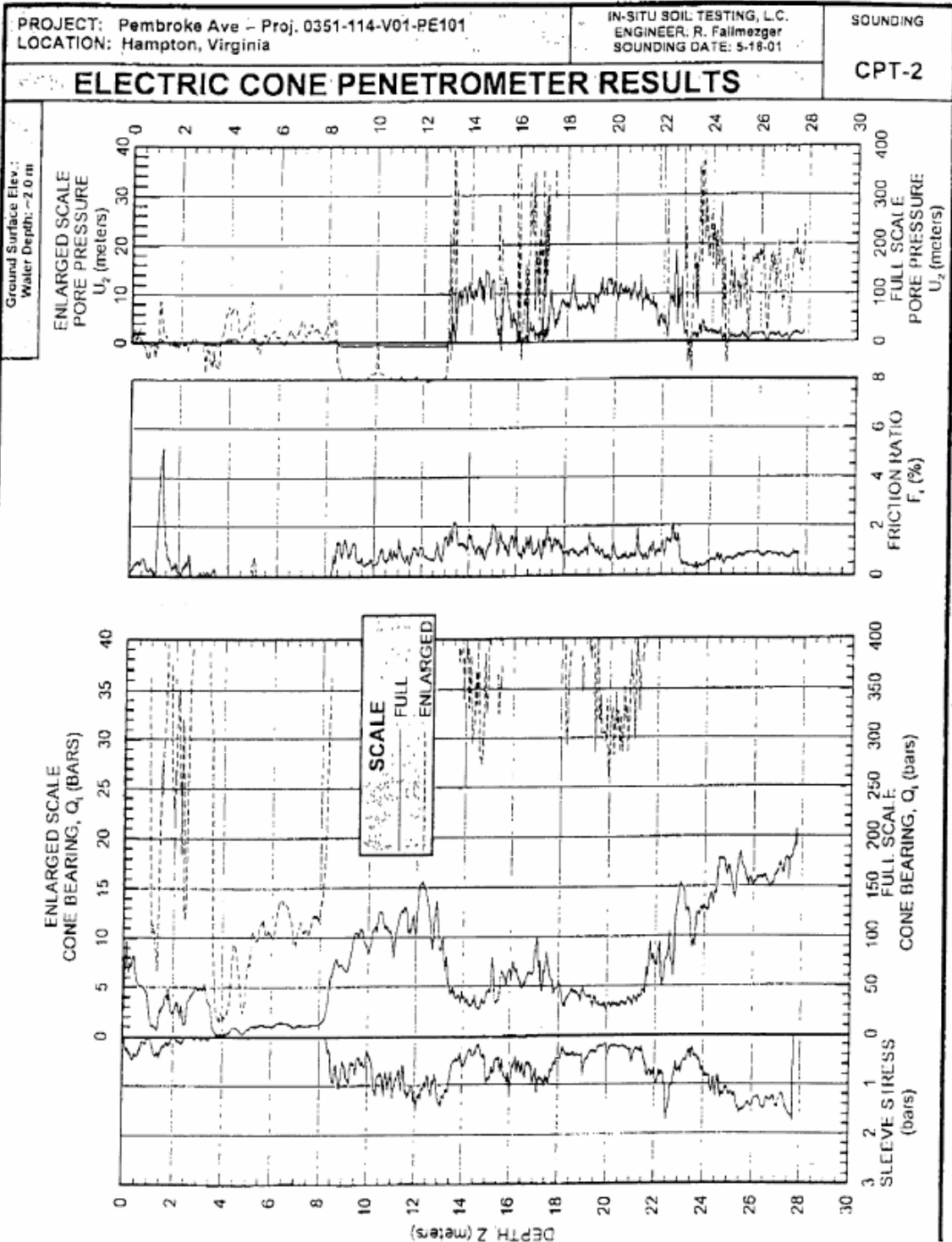


Figure D.5 CPT-2

CONE PENETROMETER TEST LOG

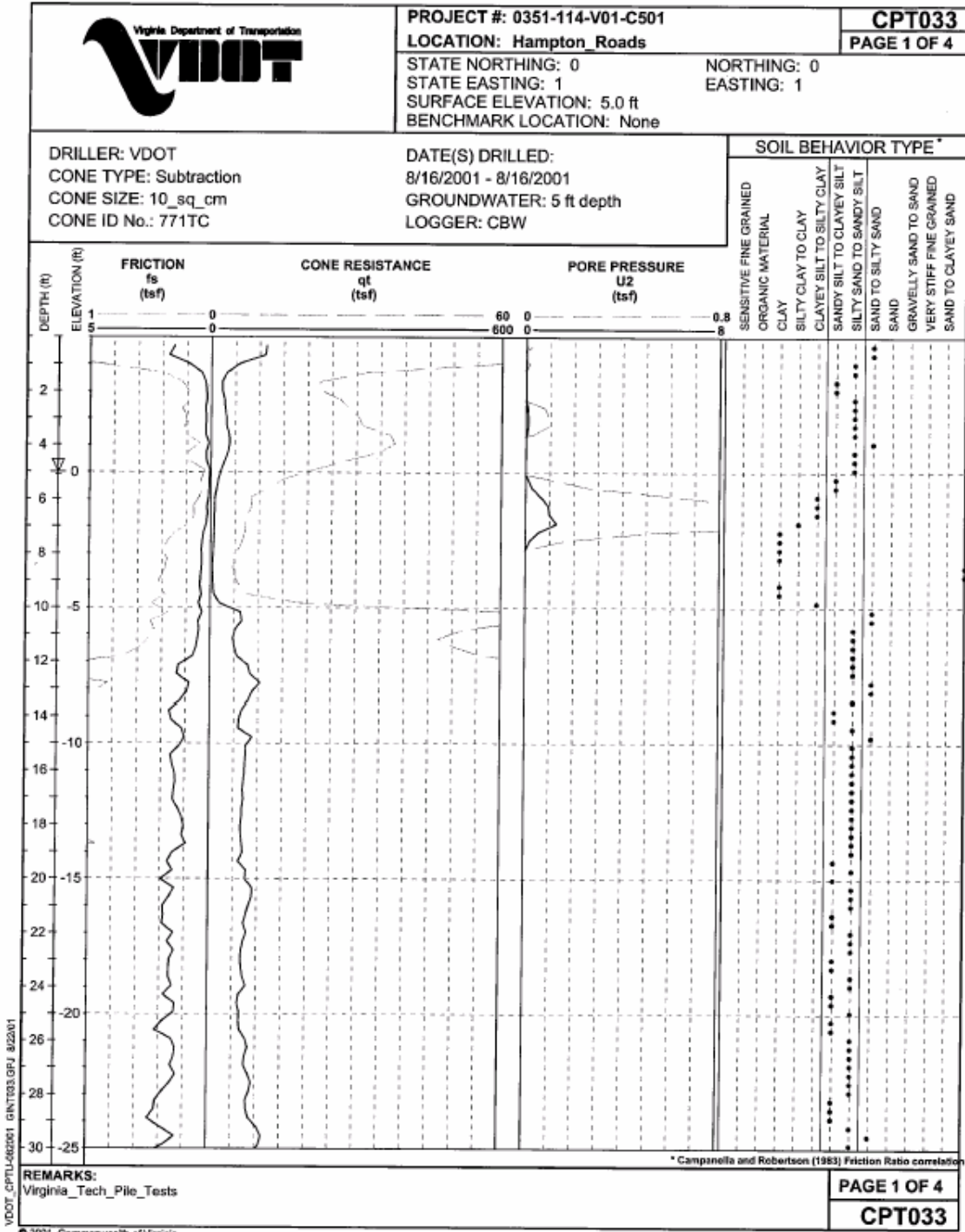


Figure D.6 CPT033

CONE PENETROMETER TEST LOG

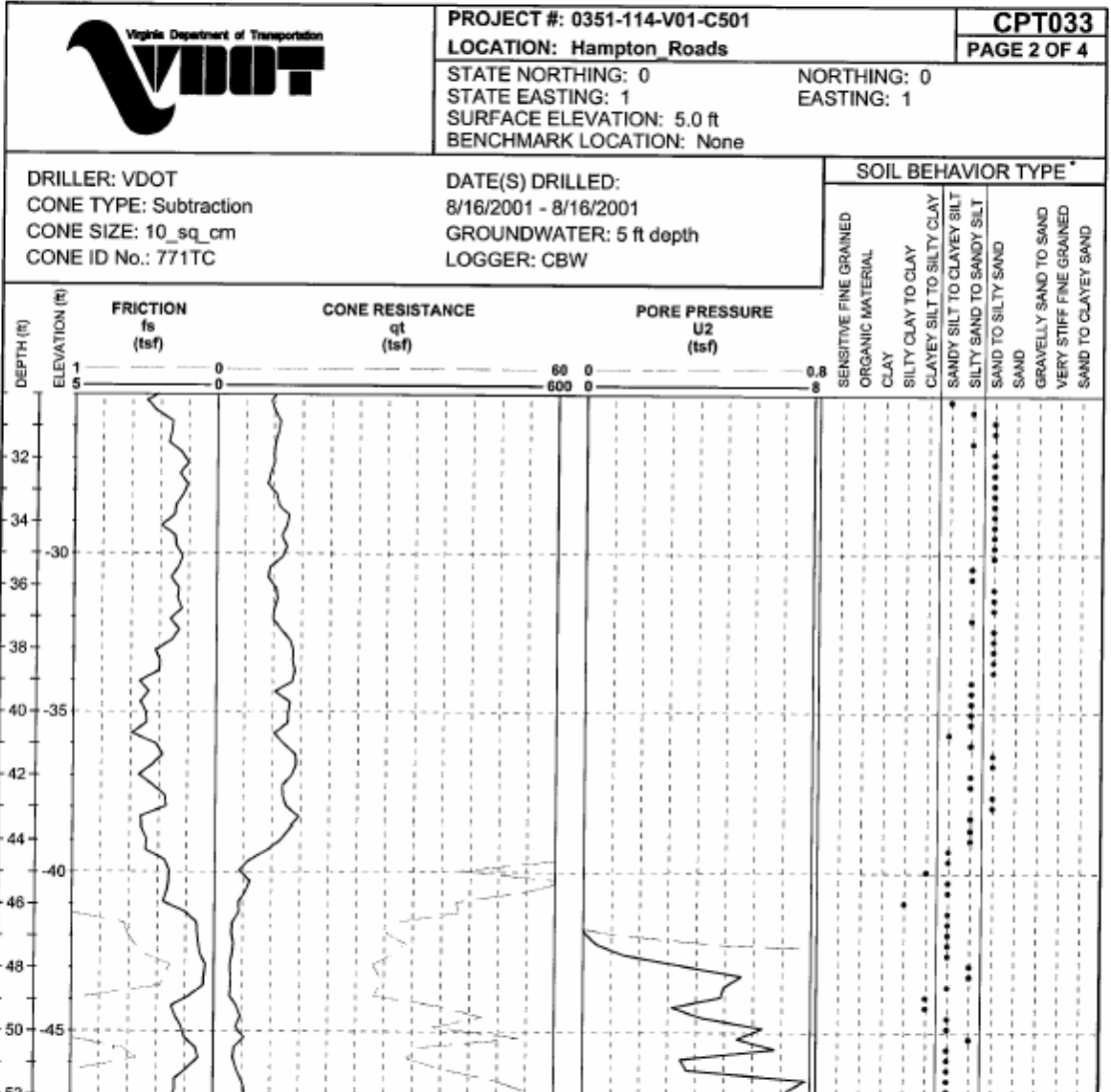
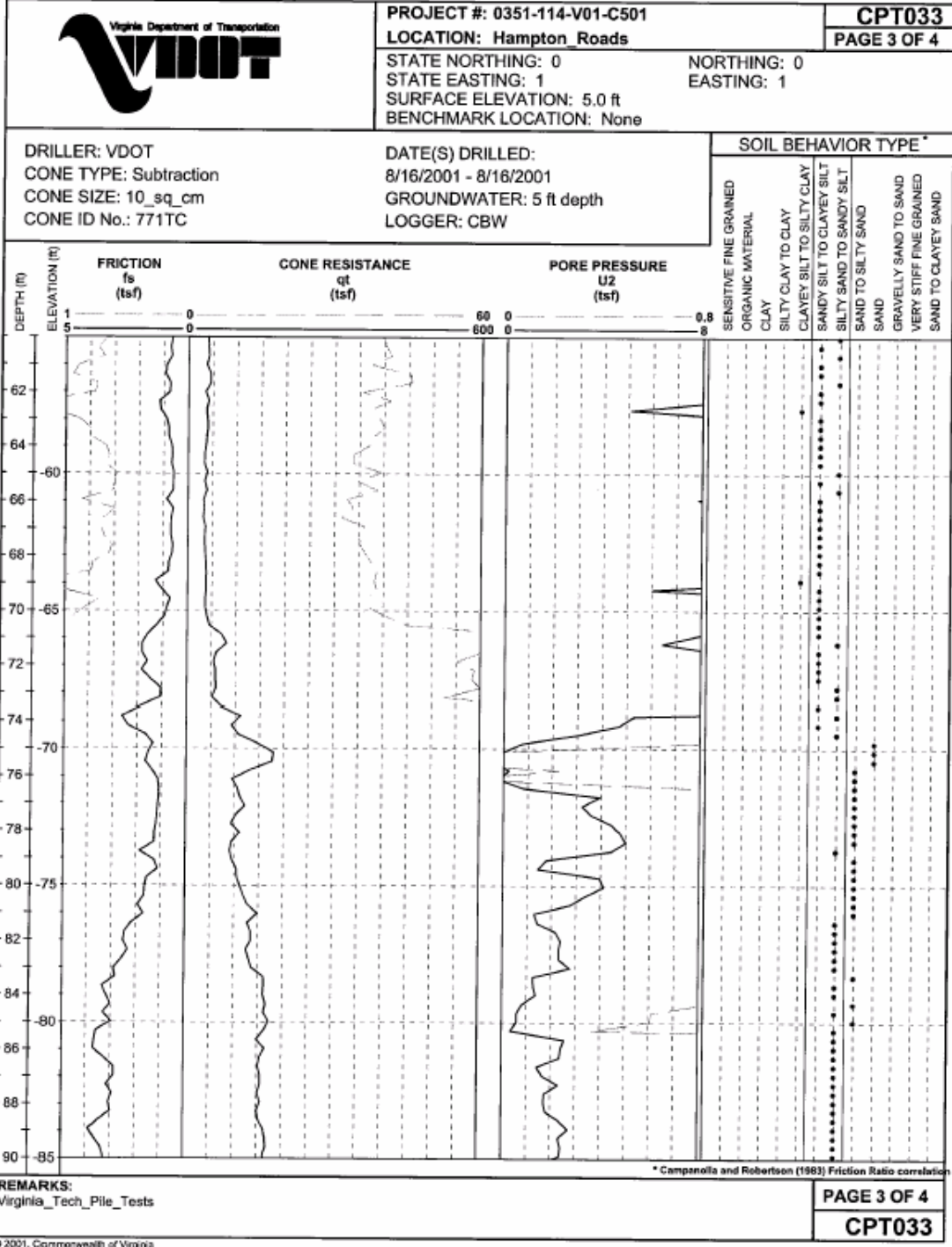


Figure D.6 CPT033, continued

CONE PENETROMETER TEST LOG



VDOT_CPTU-082001_GINT033.GPJ 8/22/01

REMARKS:
Virginia_Tech_Pile_Tests

PAGE 3 OF 4
CPT033

© 2001, Commonwealth of Virginia

Figure D.6 CPT033, continued

CONE PENETROMETER TEST LOG

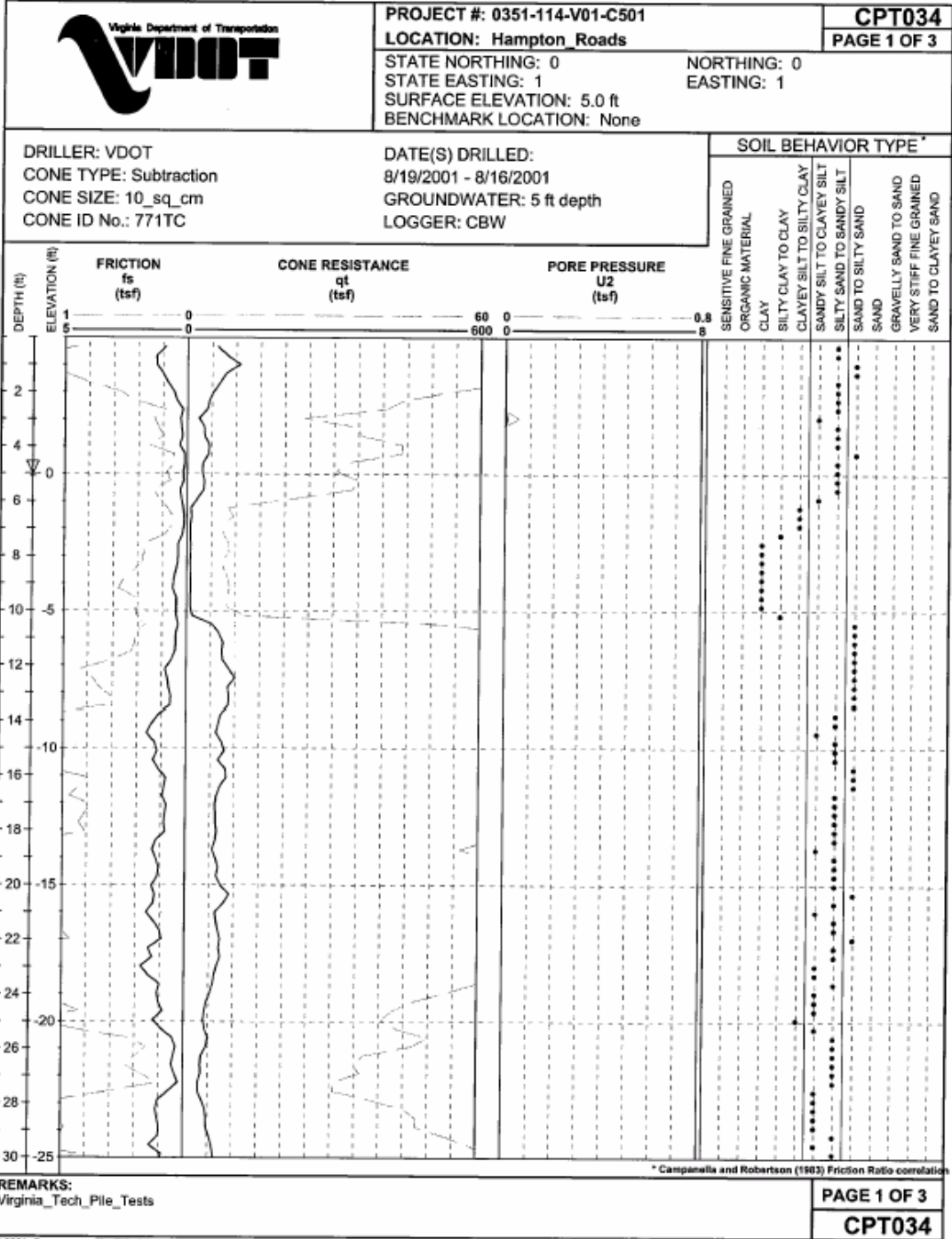


Figure D.7 CPT034

CONE PENETROMETER TEST LOG

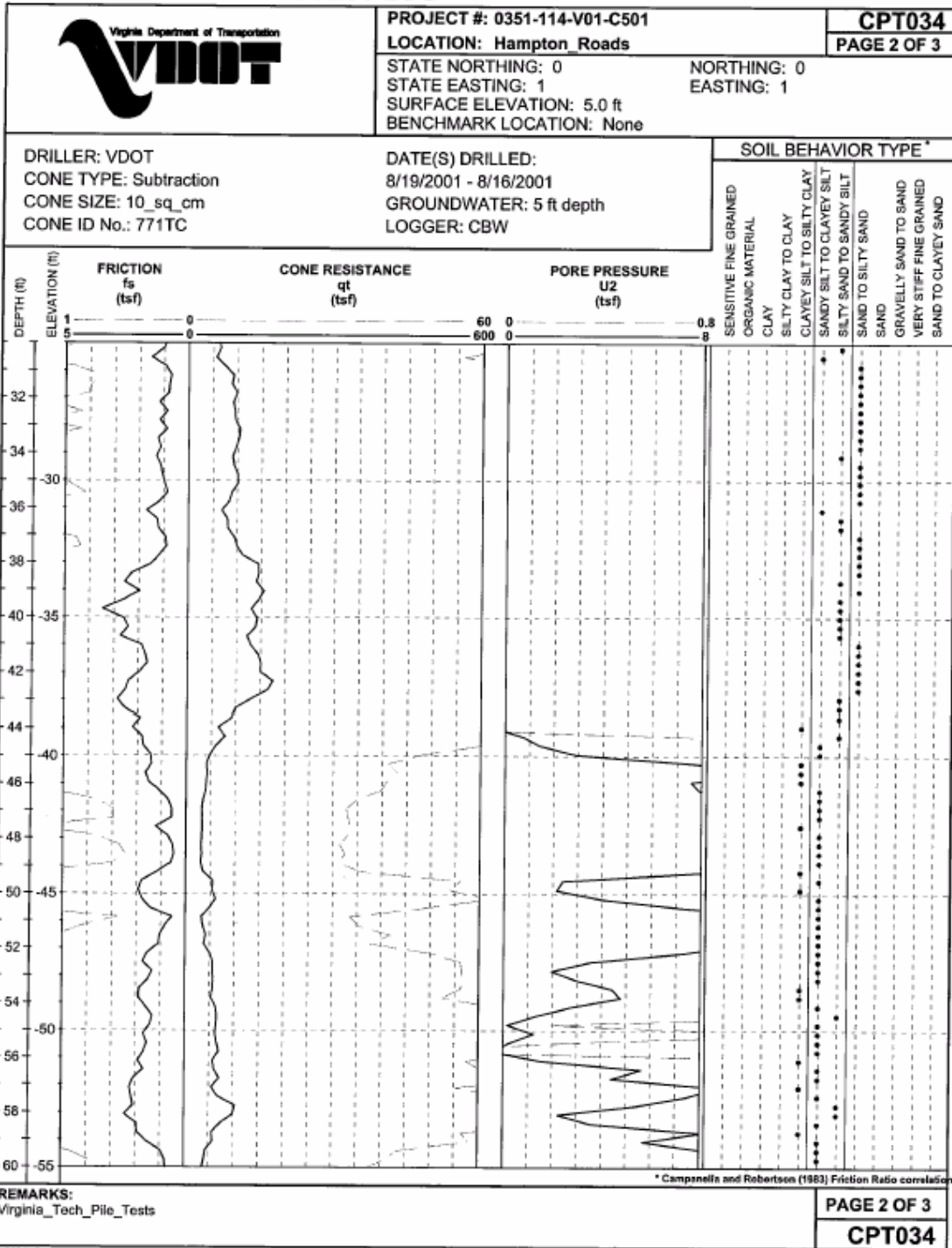


Figure D.7 CPT034, continued

CONE PENETROMETER TEST LOG

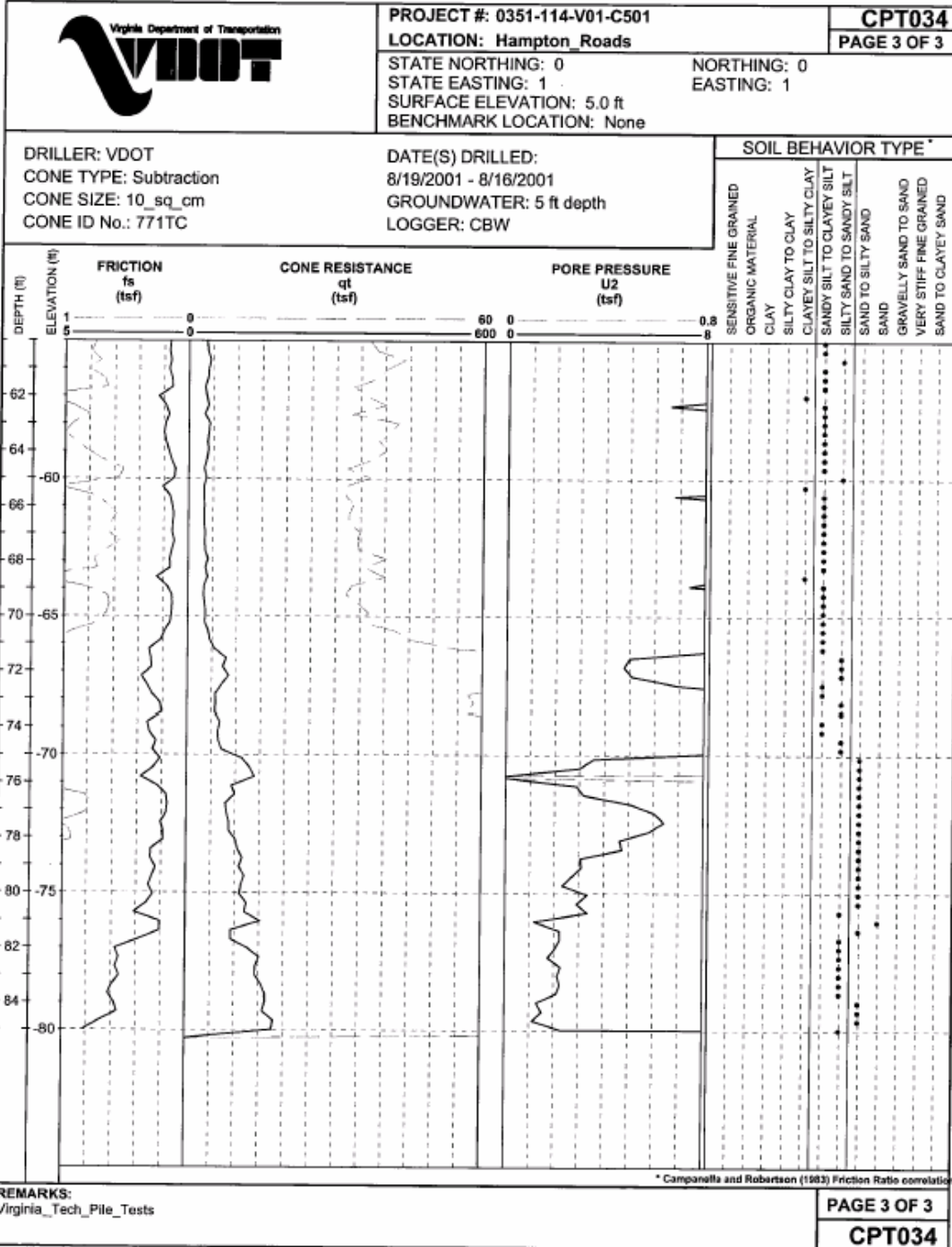


Figure D.7 CPT034, continued

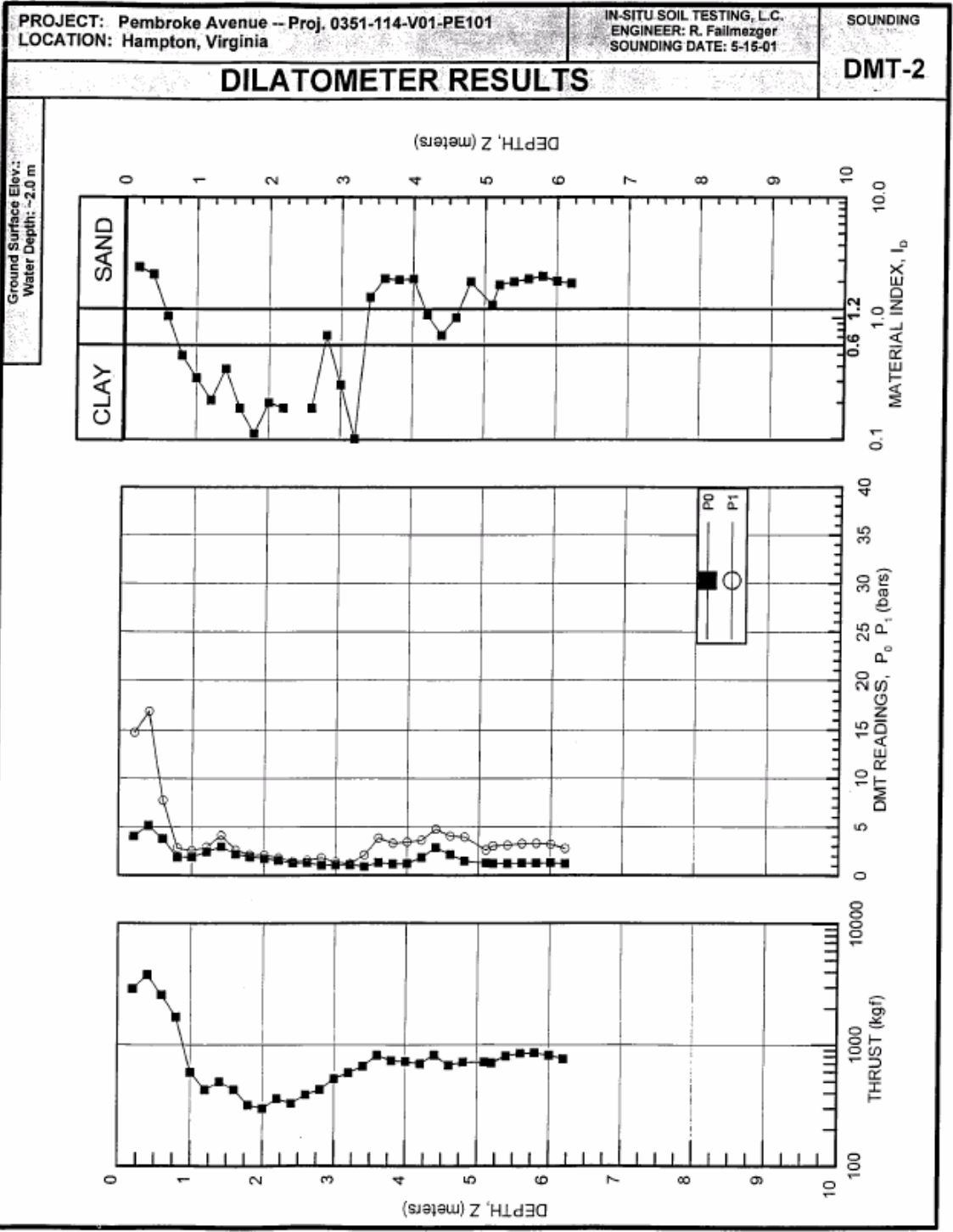


Figure D.8 DMT