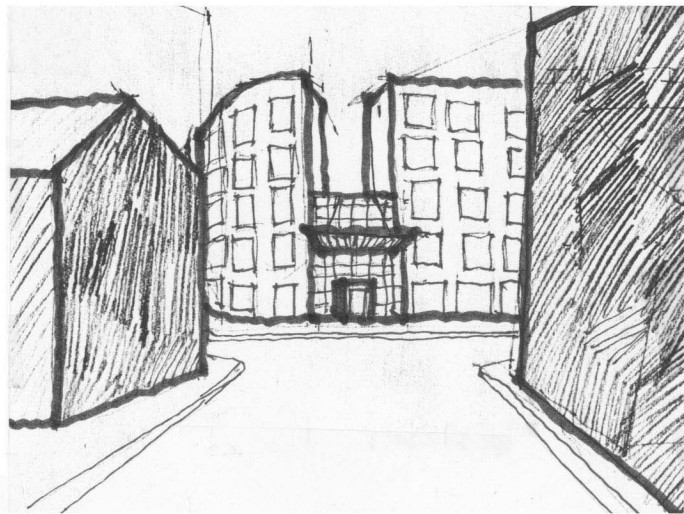


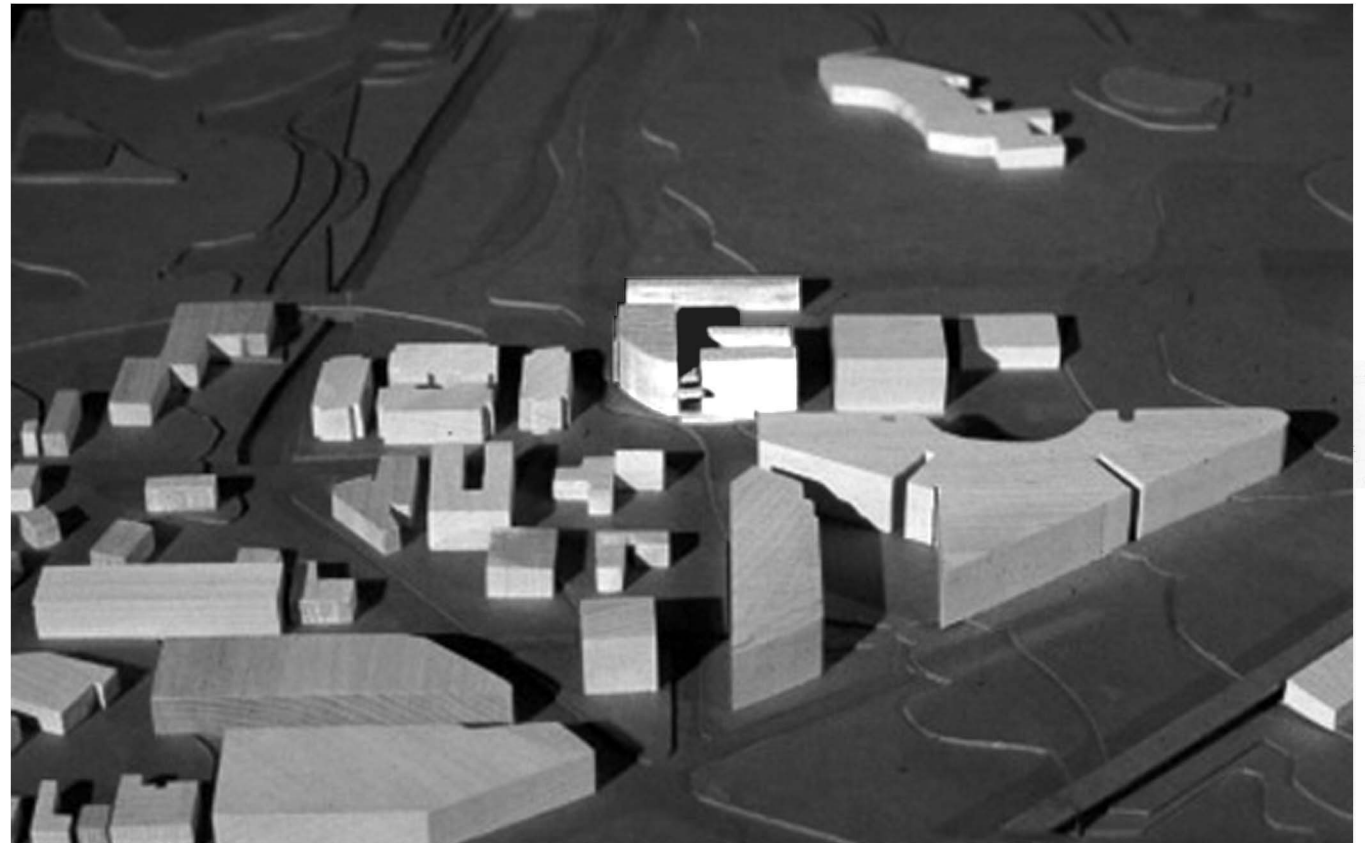
Site Plan at the Urban Graduate Center.



Early sketch and site plan of north façade as seen from Reinekers Lane.

Access

The Urban Graduate Center is located at the corner of two major automobile paths of travel. Most of the pedestrian traffic to the school will be coming to and from the King Street Metro Station. The main entrance was located directly across from Reinekers Lane for pedestrian access and visibility from the automobile. Parking is provided behind the school.



Model view looking at north façade.