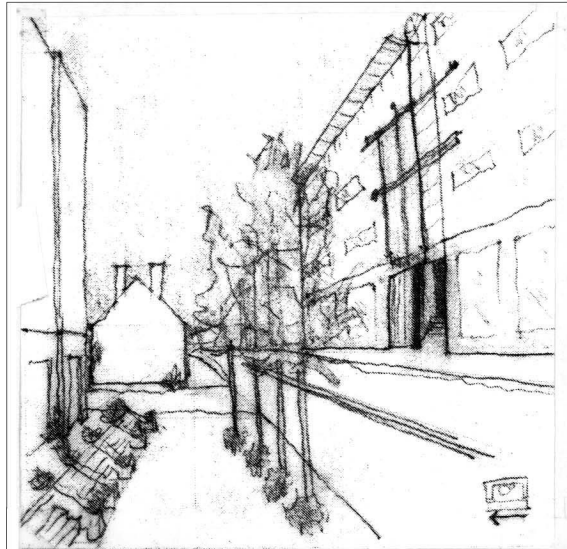
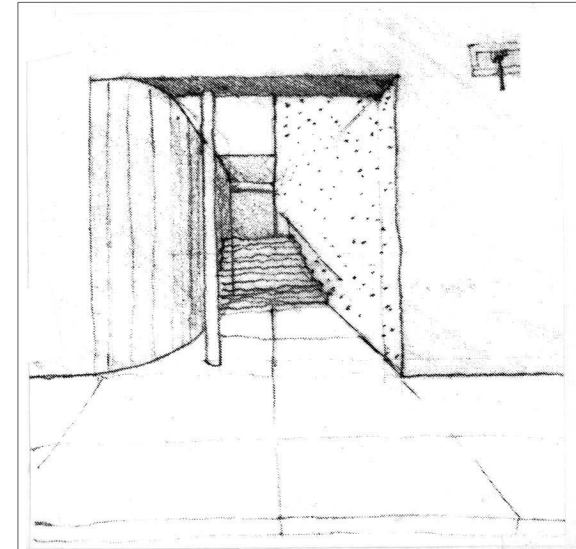


Experience

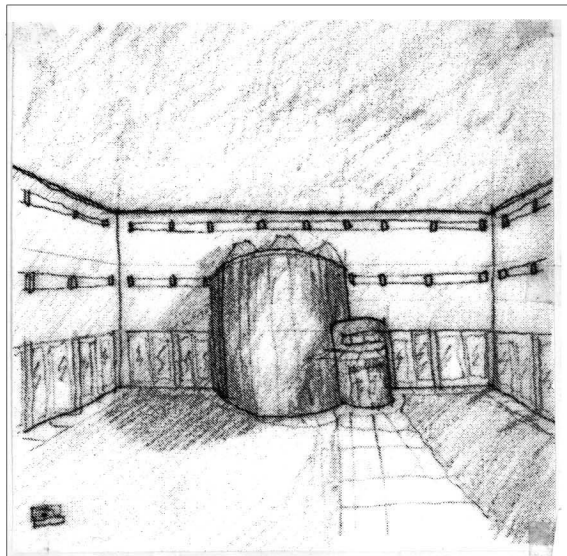
An early design for the Urban Graduate Center began by considering the experience and perception of the building through a pedestrian's progression from the city to the inner sanctum of the courtyard. The series of vignettes helped to focus the design on the layers, scale, and proportions that are required for the building to fit the site and the purpose of the Urban Graduate Center. The Center is part of the public university system, it is established to serve the public, and therefore should have a notable presence in the city. However, the Center is a learning institution that requires a level of privacy in order to allow students and professors to focus on education. The series of vignettes helped to identify critical areas of design that may not have revealed themselves through program elements alone.



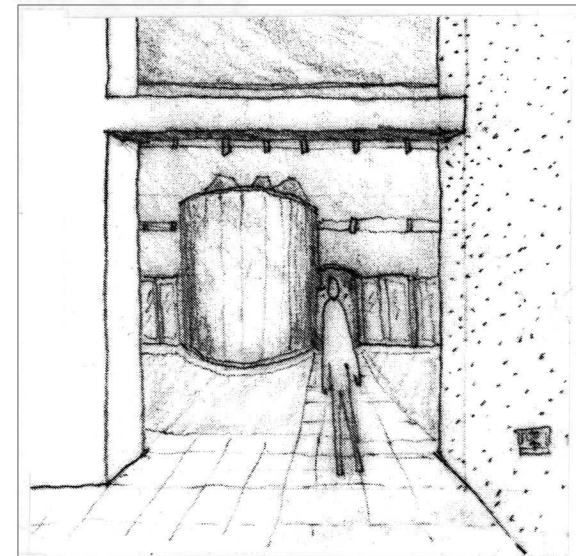
From Duke Street.



Street entrance.



Through the threshold.



Looking into the courtyard.