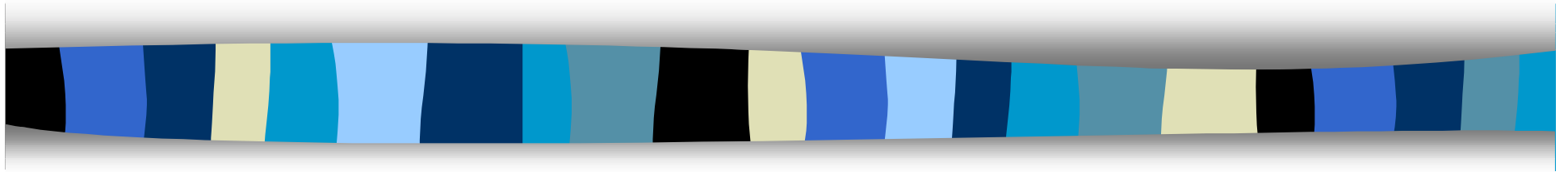


DLA Data



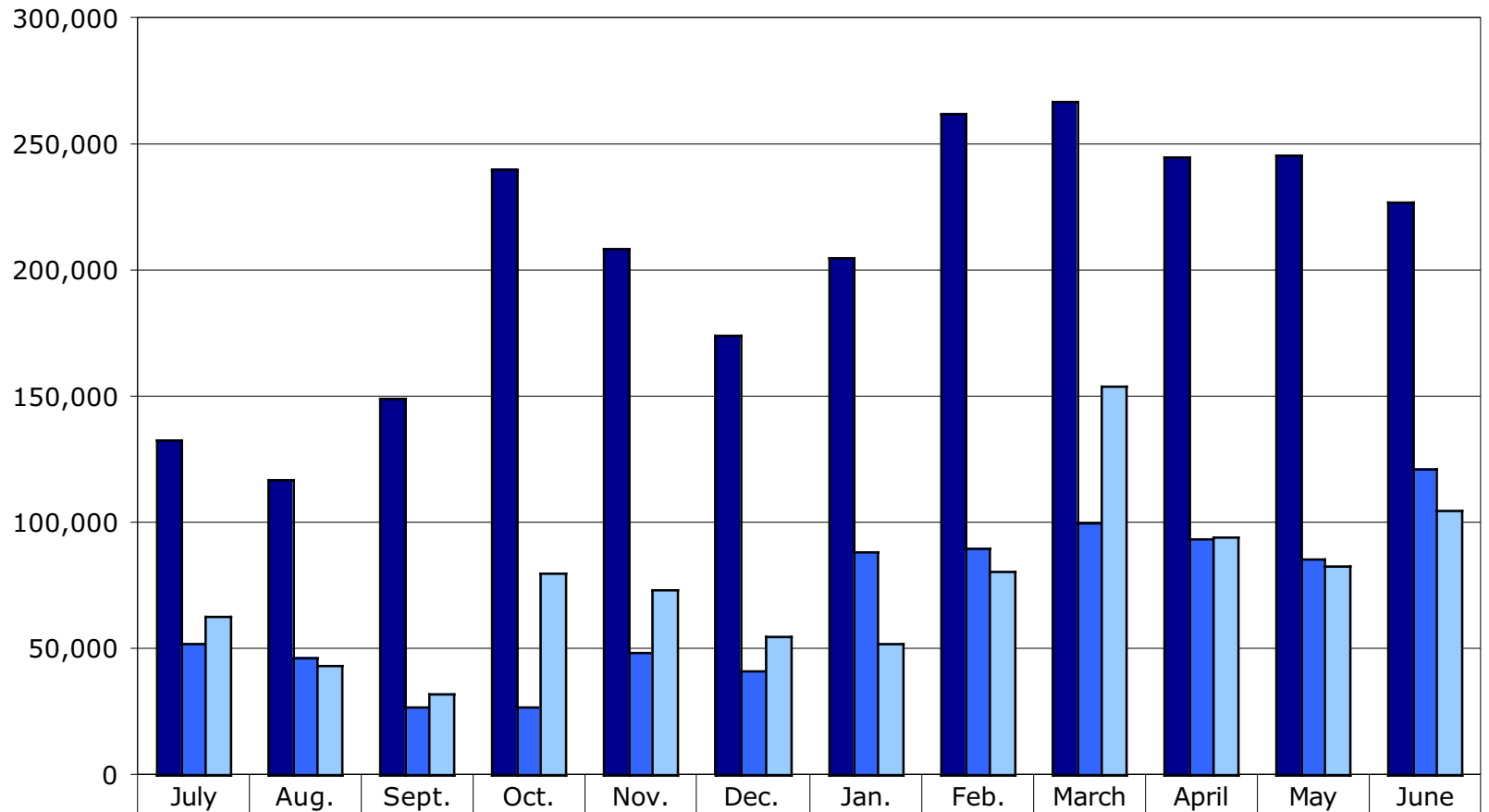
Digital Library and Archives

University Libraries

Virginia Tech

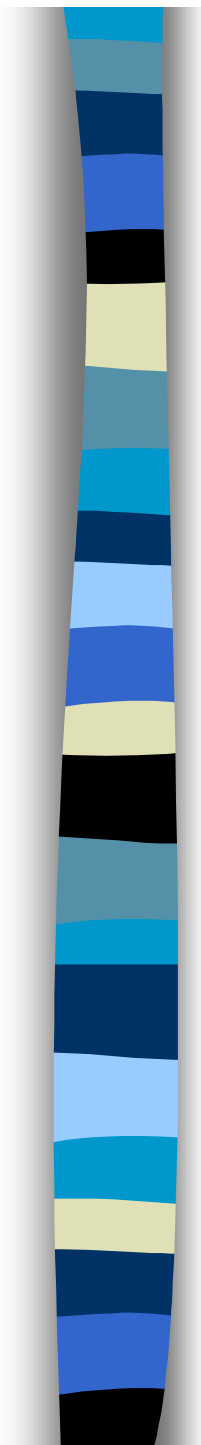
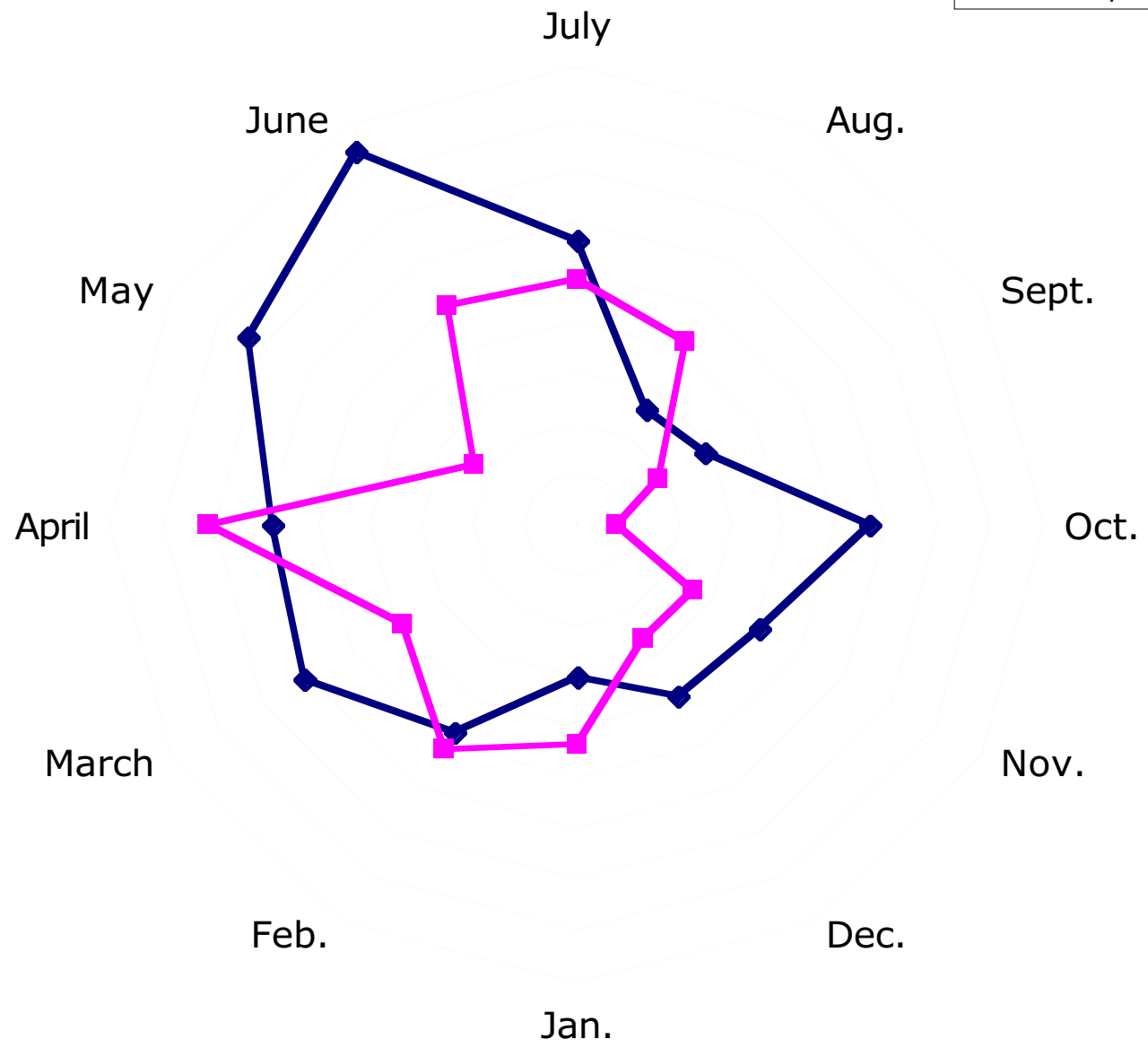
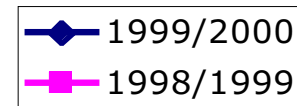
Gail McMillan gailmac@vt.edu

E-Journals: Page Access 1997/98-1999/2000

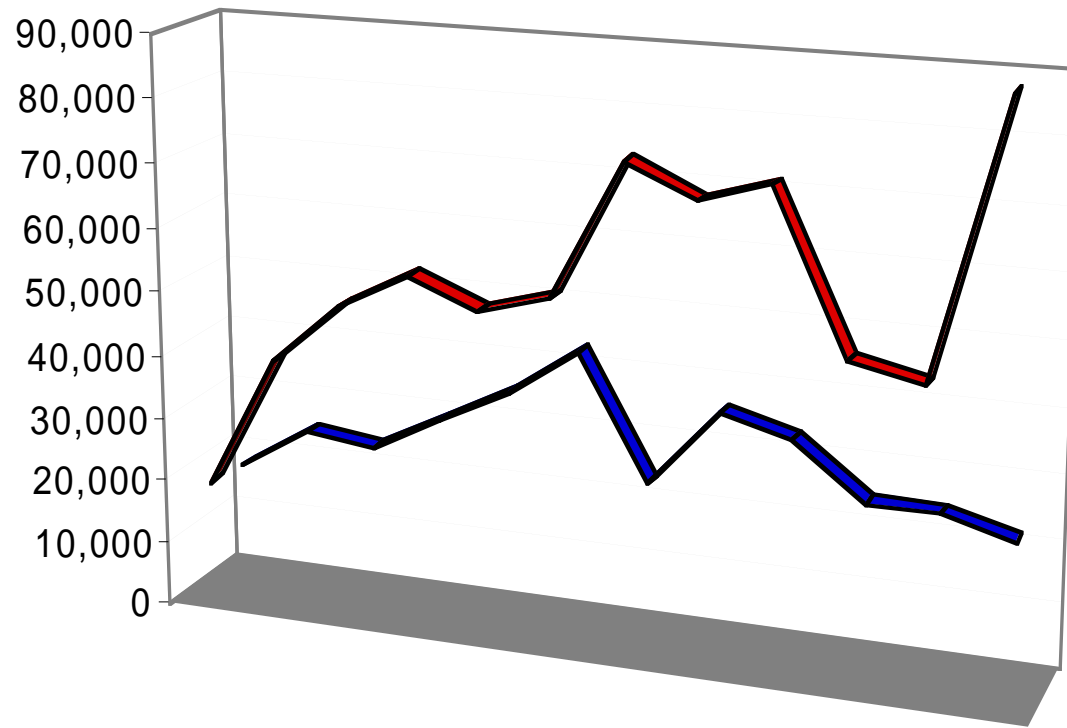


	July	Aug.	Sept.	Oct.	Nov.	Dec.	Jan.	Feb.	March	April	May	June
■ 1999/2000	132,906	116,892	149,628	240,316	208,234	174,544	205,204	262,469	267,318	244,883	245,601	227,297
■ 1998/1999	52,122	46,256	27,024	27,212	48,830	41,500	88,662	89,831	100,226	93,726	85,890	121,726
■ 1997/1998	62,838	43,741	32,218	80,025	73,463	55,088	52,093	81,025	154,499	94,385	82,882	105,250

WDBJ7

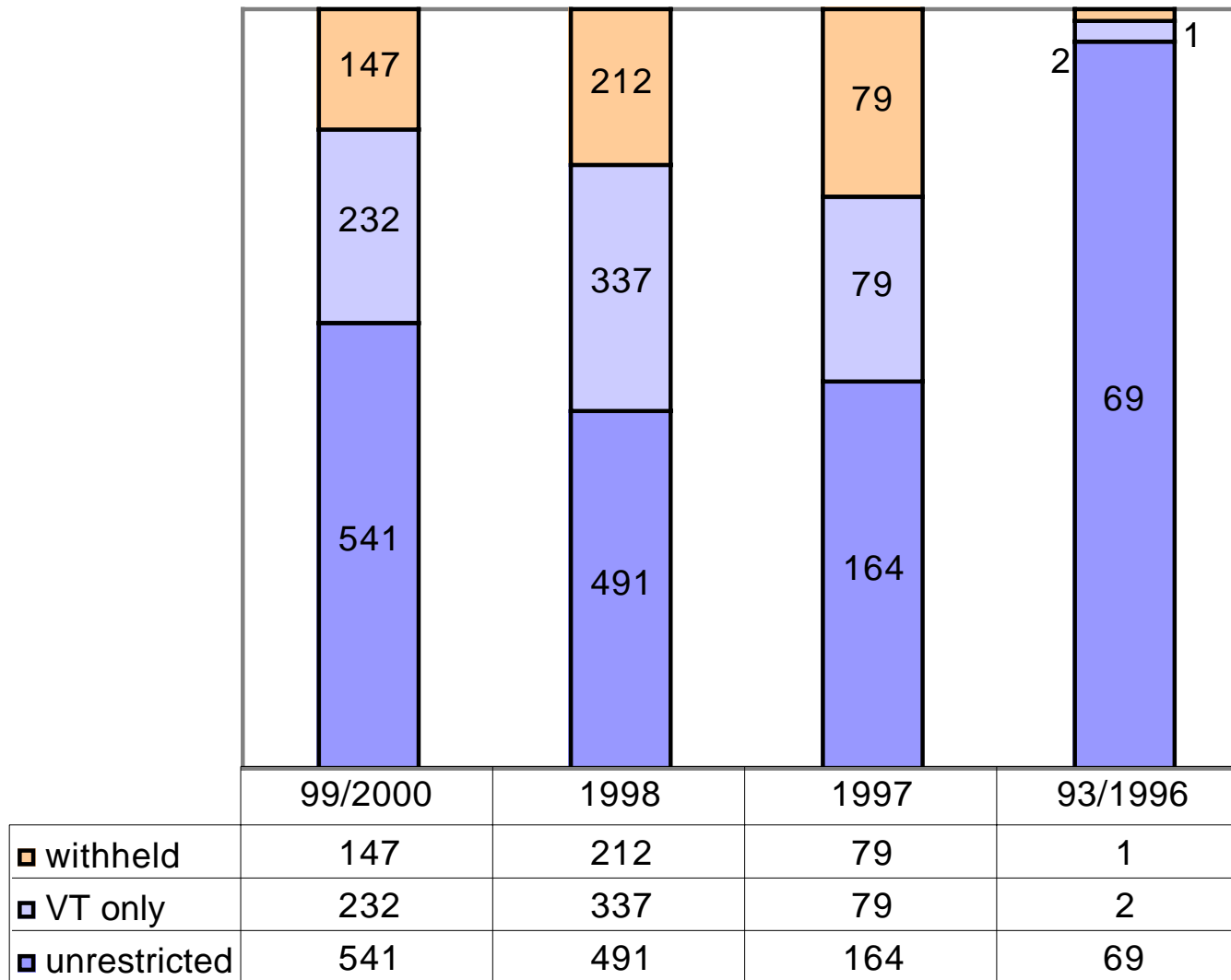


VT Imagebase: 1998/1999-1999/2000

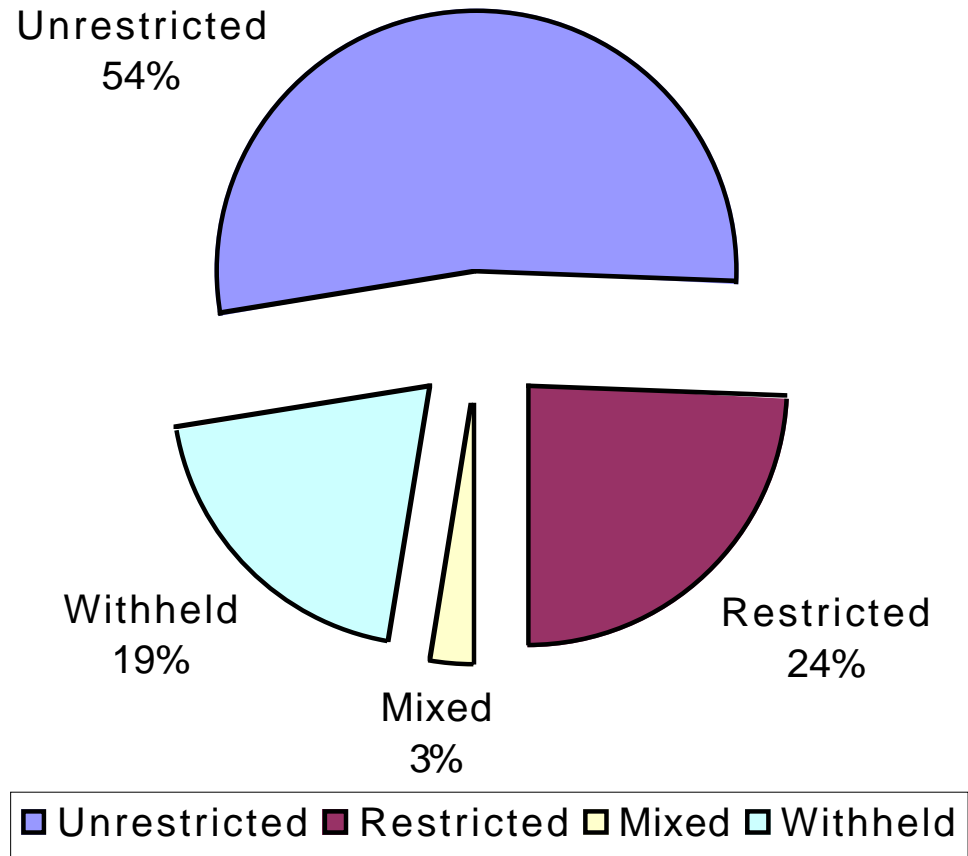


	July	Aug.	Sept.	Oct.	Nov.	Dec.	Jan.	Feb.	March	April	May	June
■ 1999/2000	19,395	40,331	49,833	55,619	51,513	54,408	75,859	71,035	74,337	49,704	47,242	89,968
■ 1998/1999	18,794	25,563	23,908	29,657	35,268	42,826	23,669	36,011	33,263	24,458	24,458	21,457

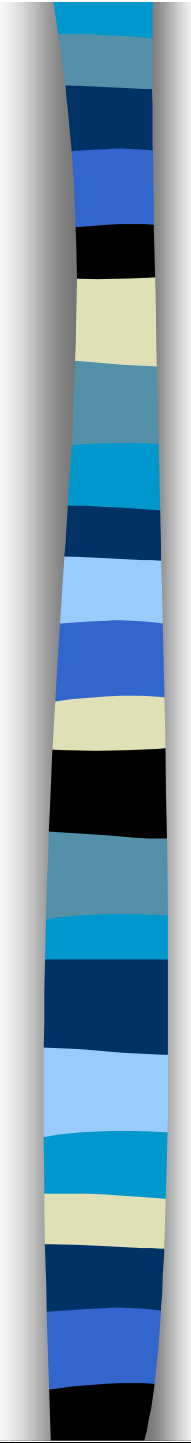
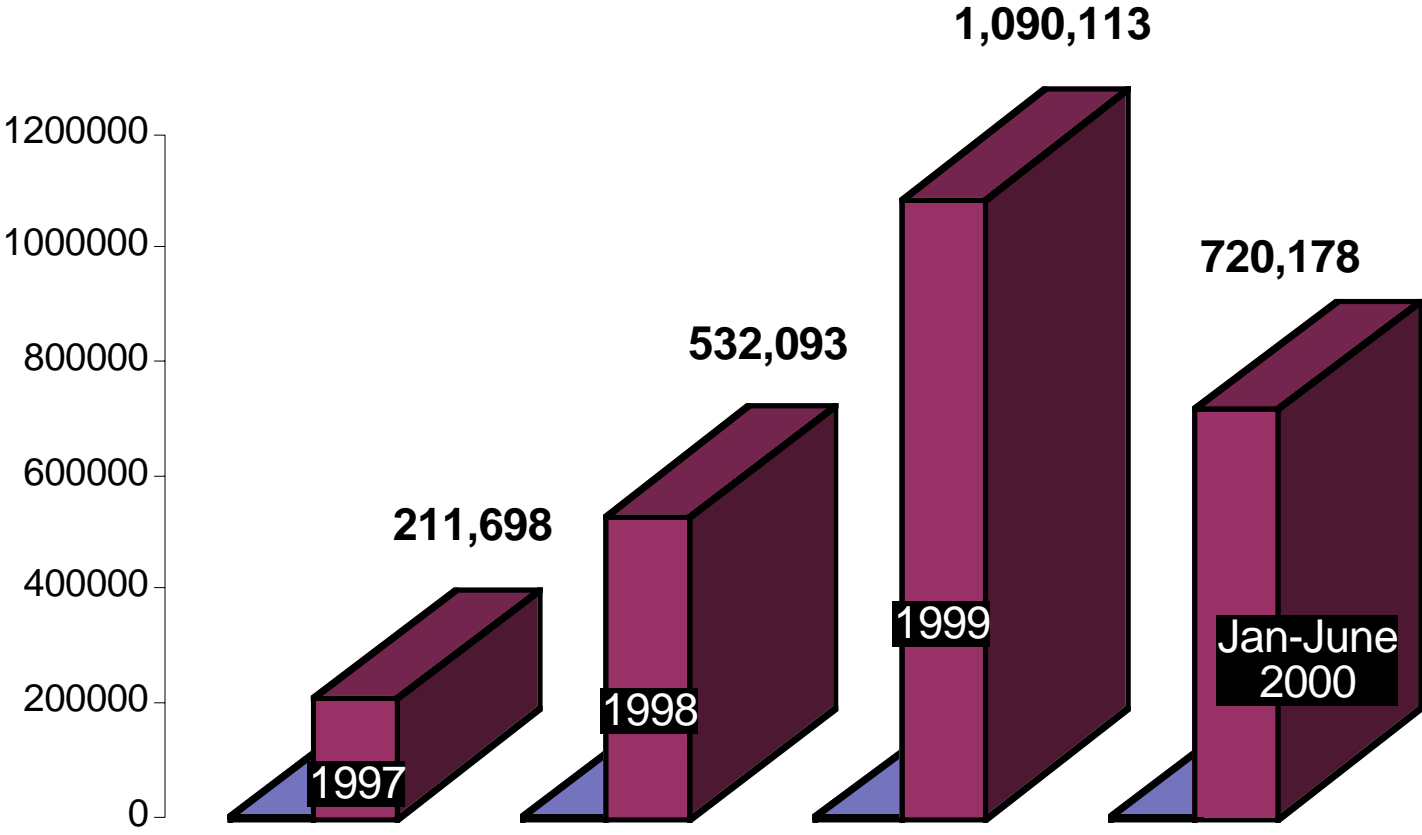
Availability of VT ETDs by Year of Defense



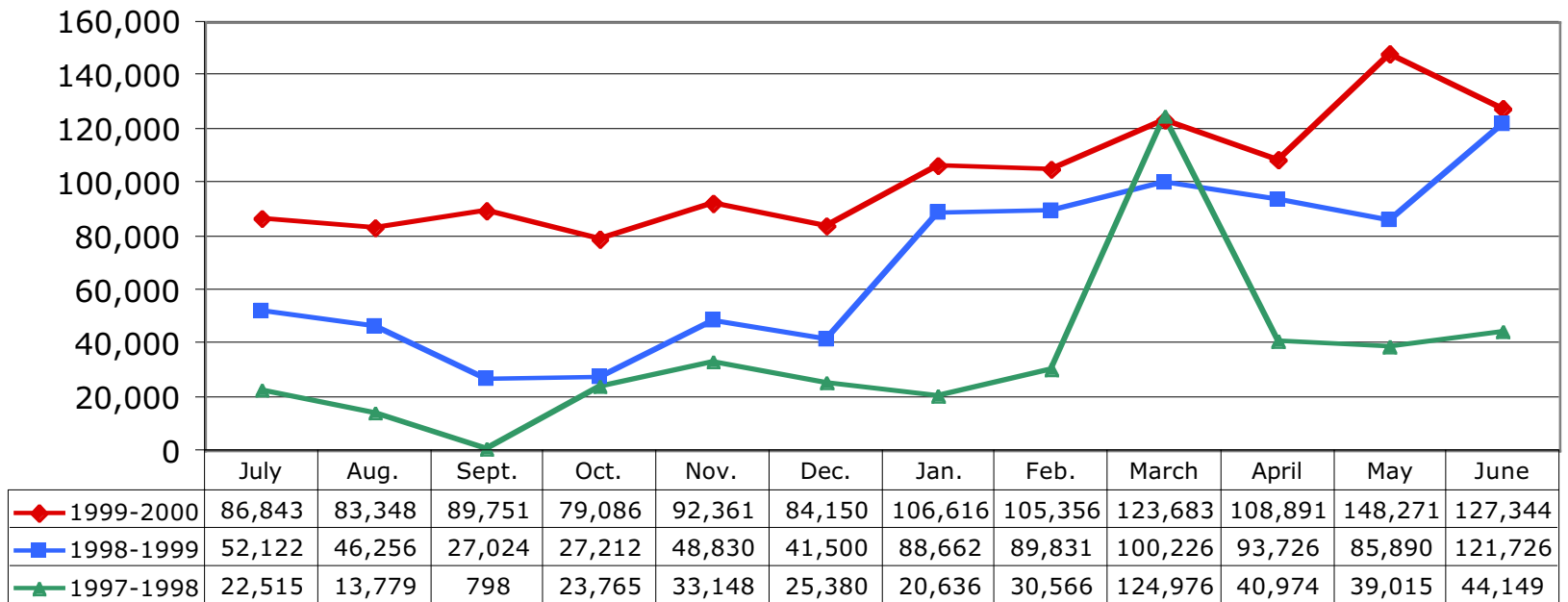
VT ETDs: Availability Aug. 21, 2000



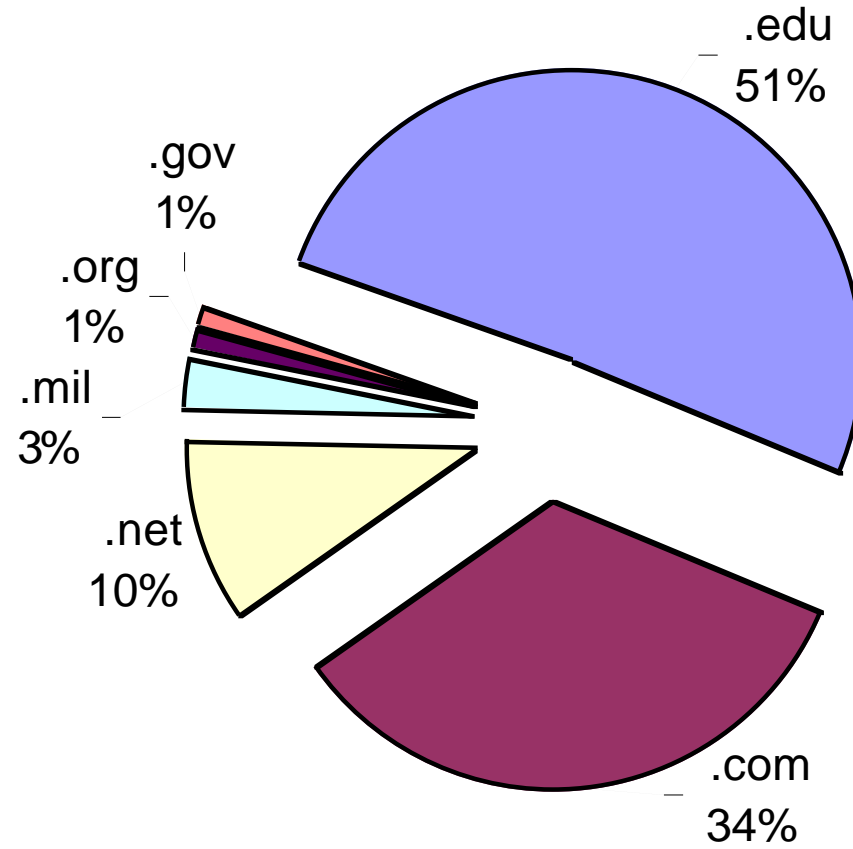
Yearly Access to VT ETDs



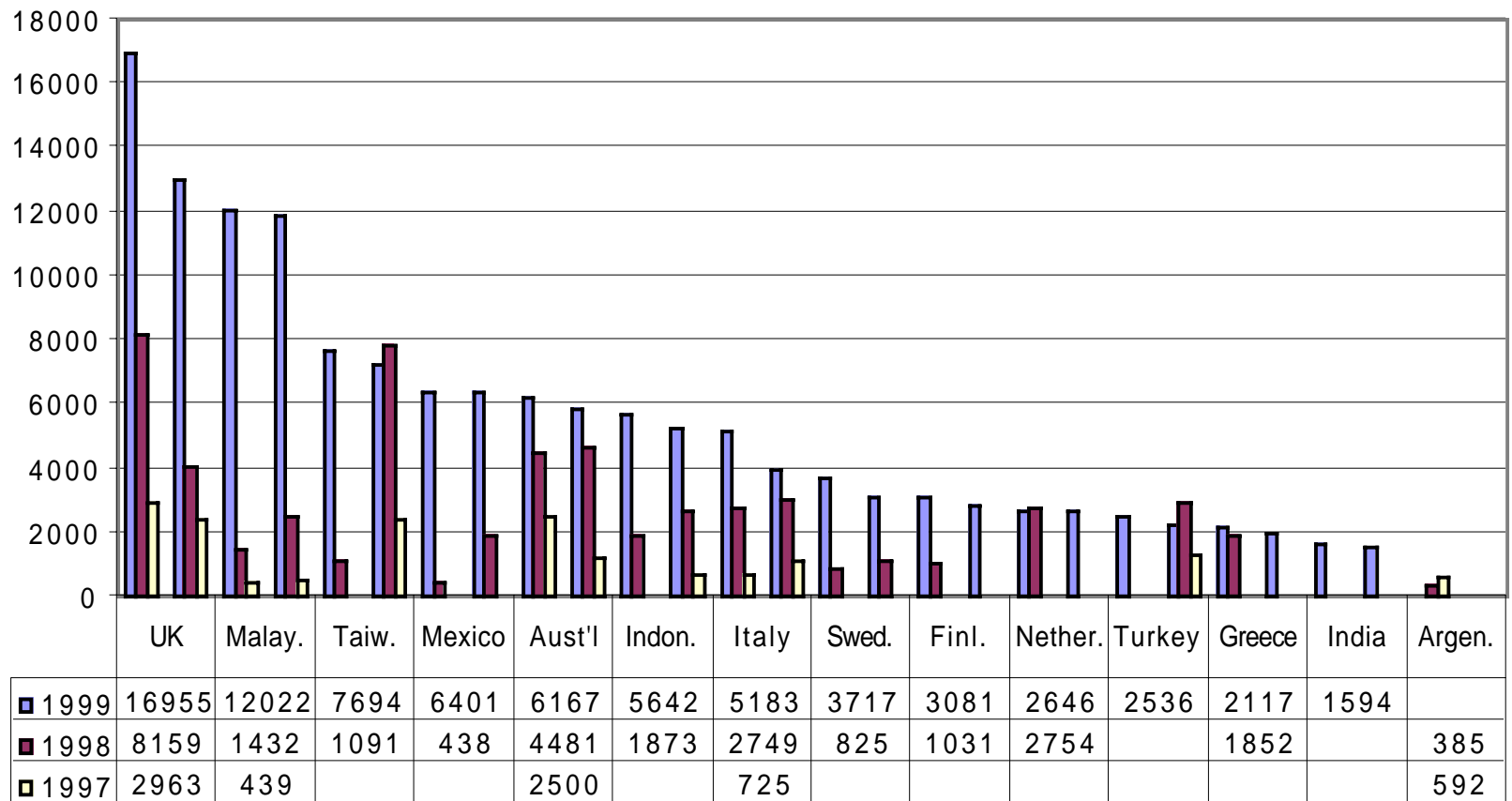
VT Electronic Theses & Dissertations Access 1997/1998 - 1999/2000



US Access to VT ETDs: 1997-1999



International Accesses to VT ETDs: 1997-1999





DLA Surveys: evaluating resources and services

- <http://lumiere.lib.vt.edu/surveys/>
 - EReserve Student Survey Fall 1999
 - http://lumiere.lib.vt.edu/surveys/take_survey.php3?set_ID=EReservefall99
 - ETD Author Survey 1999/2000
 - http://lumiere.lib.vt.edu/surveys/take_survey.php3?set_ID=ETD_fall_99_author
 - ETD User Survey 1999/2000
 - http://lumiere.lib.vt.edu/surveys/take_survey.php3?set_ID=etduser
 - Assessing Technology-based Projects
 - http://lumiere.lib.vt.edu/surveys/take_survey.php3?set_ID=Tech4P
-

digital library and archives

formerly the scholarly communications project



Scholarly Publishing Services


[EJournals](#)
[ETDs \(electronic theses and dissertations\)](#)
[News Reports](#)
[Virginia Tech Publications](#)

Library Services and Archives

[Copyright](#)
[EReserve](#)
[Special Collections: Manuscripts, Rare Books, University Archives](#)
[VT ImageBase](#)

General Information

[Search the Digital Library and Archives](#)
[Presentations](#)

 [DLA 1999/2000 or historical information about](#)

The **Scholarly Communications Project** has expanded its resources and services and merged with **Special Collections** to become the university's **Digital Library and Archives**. Since 1989, SCP has worked with members of the university community to help them create online resources such as electronic journals, and to use library services such as electronic reserve with its centralized access to course materials. In addition, DLA designs and maintains systems including those for electronic theses and dissertations and digital images. Special Collections, including rare books, manuscript collections, and the University Archives, collects and preserves unique historical materials, providing access to them in their original form and online through the Internet.

Search DLA

Gail McMillan
DLA director
gailmac@vt.edu
(540) 231-9252

Anthony Atkins
Technical Director
tblake@vt.edu
(540) 231-9235

Caryl Gray
Reference Librarian
cgray@vt.edu
(540) 231-9229
Ask a Librarian



<http://scholar.lib.vt.edu>
updated Jan. 13, 2000 (GMc)